



## Great Dover Street, SE1

### £475,000

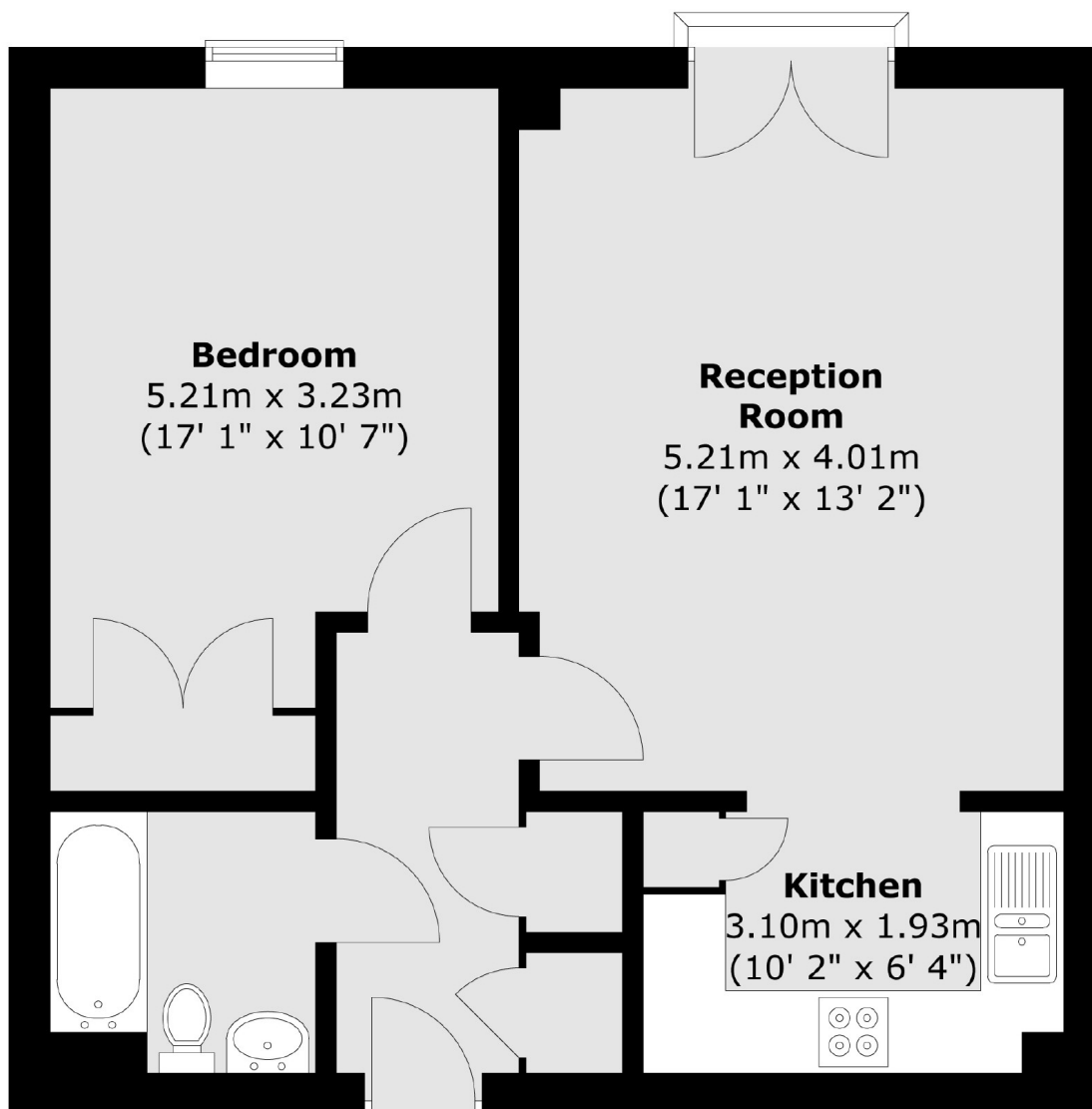
A highly attractive modern apartment with a very spacious open plan kitchen and living room, ample storage throughout, a three piece bathroom and a generous double bedroom. Also, benefitting from off-street parking, communal gardens, residents' gym and on-site porter. This is a chain free sale.

Ratcliffe Court is enviably located tucked well back off Great Dover Street, moments away from Borough High Street, Borough & London Bridge Stations. Very close by to Borough Market, the South Bank and the Shard, with numerous other attractions on your doorstep.

### Features

- One Double Bedroom
- Open Plan Living Space
- Large Parking Space
- Residents' Gym
- Concierge
- Communal Garden
- Chain Free Sale

# Great Dover Street, London, SE1



Total area (approx.) : 54.7 sq. m (589 sq. ft)