



Great Dover Street, SE1 £620 Per week

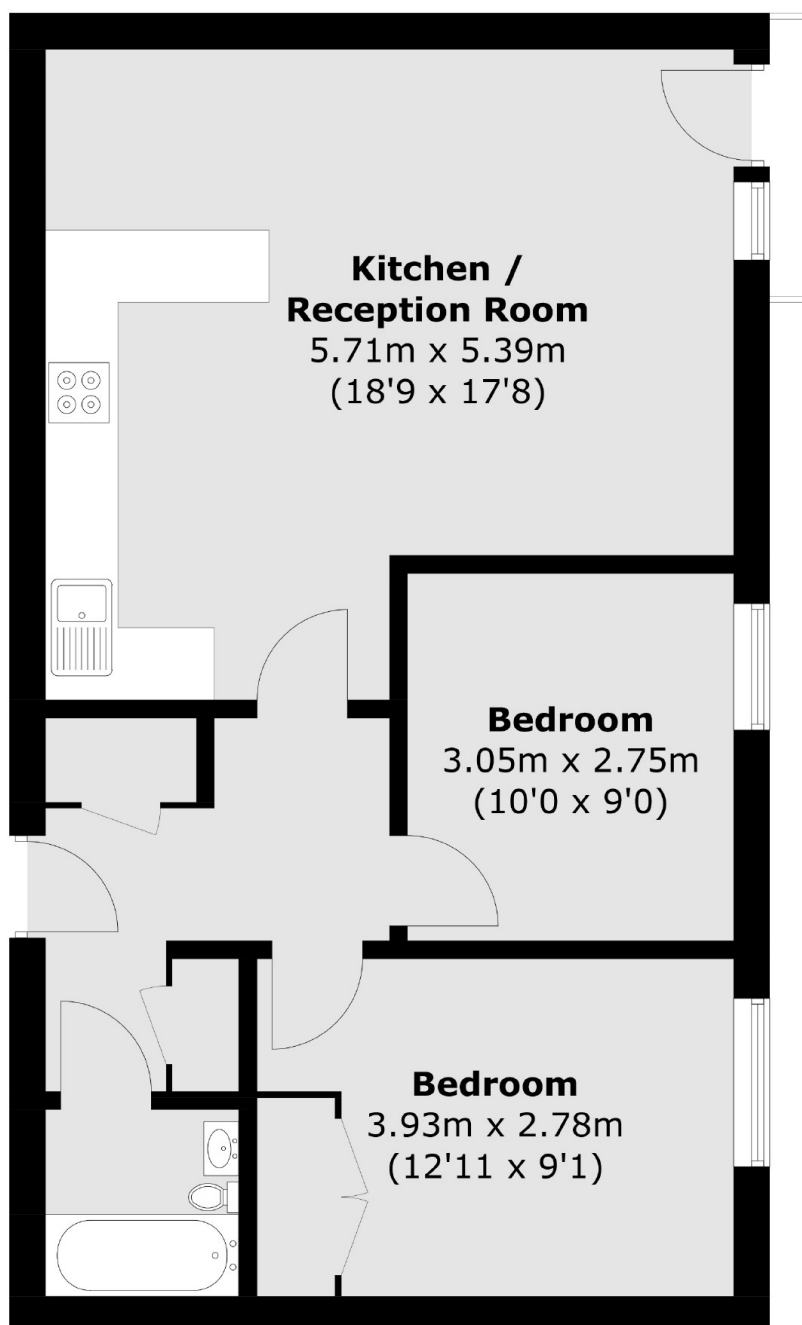
A top floor two double bedroom flat in Borough, SE1. The property is a good example of open-plan living and features large floor to ceiling windows, the property further benefits from its own on site concierge and private residents gym.

With Borough Station seconds away and London Bridge Station also close by, Longstone Court has plenty of transport links. The ever popular Borough Market and Bermondsey Street are within walking distance.

Features

- Two Bedroom Apartment
- Top Floor
- On Site Concierge
- Private Residents Gym
- Great Transport Links

Great Dover Street, London, SE1



Total area (approx.): 59.2 sq. m (637.2 sq. ft)

Dexters

London Bridge
54 Borough High Street
London
SE1 1XL
Sales
020 7650 5 100

Energy Rating: D. We aim to make our particulars both accurate and reliable. However they are not guaranteed; nor do they form part of an offer or contract. If you require clarification on any points then please contact us, especially if you're traveling some distance to view. Please note that appliances and heating systems have not been tested and therefore no warranties can be given as to their good working order.

 **RICS** | Regulated
Estate Agent
and Letting Agent

dexters.co.uk