



## St. Olaves Estate, SE1

### £600,000

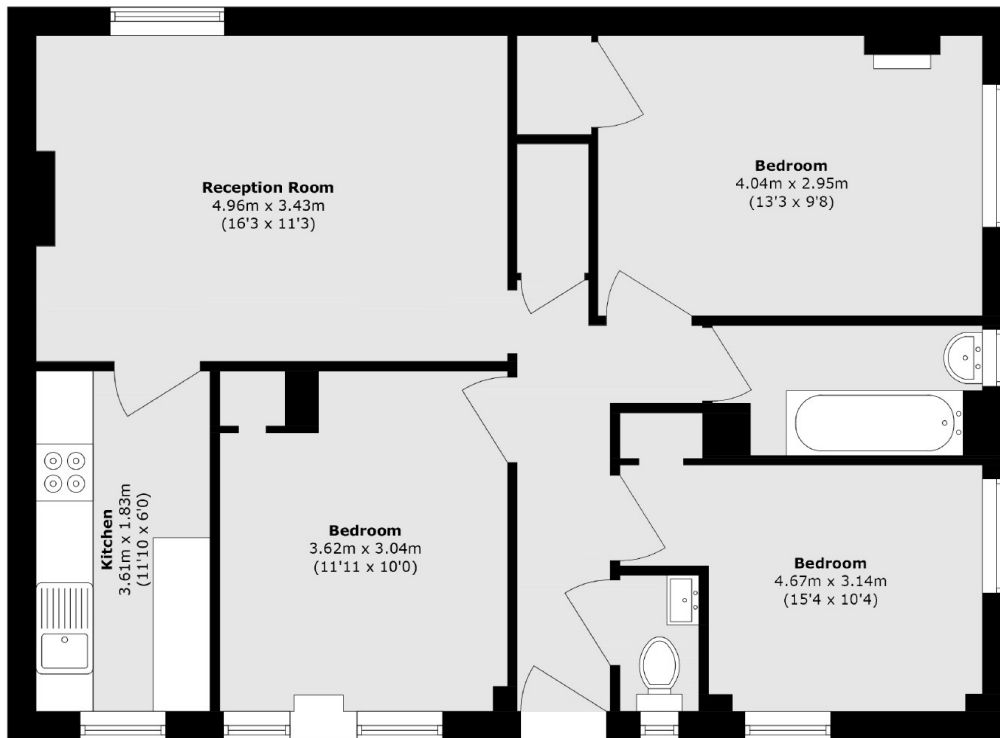
A highly attractive and recently refurbished ground floor flat with a large living room, ample room for dining, a modern kitchen, three double bedrooms and a family bathroom. This is a chain free sale.

St Olaves estate is enviably located tucked back off Fair Street and Tooley Street, moments from the riverside, London Bridge Station, Shad Thames and Borough Market.

### Features

- Chain Free Sale
- Three Double Bedrooms
- Large Living Room
- Modern Kitchen & Bathroom
- Very Centrally Located
- Excellent Transport Links

# St. Olaves Estate, London, SE1



Total area (approx.): 70.7 sq. m (761.0 sq. ft)