



Belvedere Road, SE1

£1,269 Per week

Two bedroom, two bathroom, split level, penthouse apartment within the popular Whitehouse Apartments which offers 24hr concierge, indoor pool and gym facilities.

Well located on London's South Bank, the closest station is Waterloo station. Popular local attractions include the Max Cinema, the Tate Modern and the London Eye.

Features

- Two Bedrooms
- Penthouse Apartment
- Over 1100sqft
- Large Private Terrace
- 24 Hour Concierge
- Swimming Pool
- Residents Gym

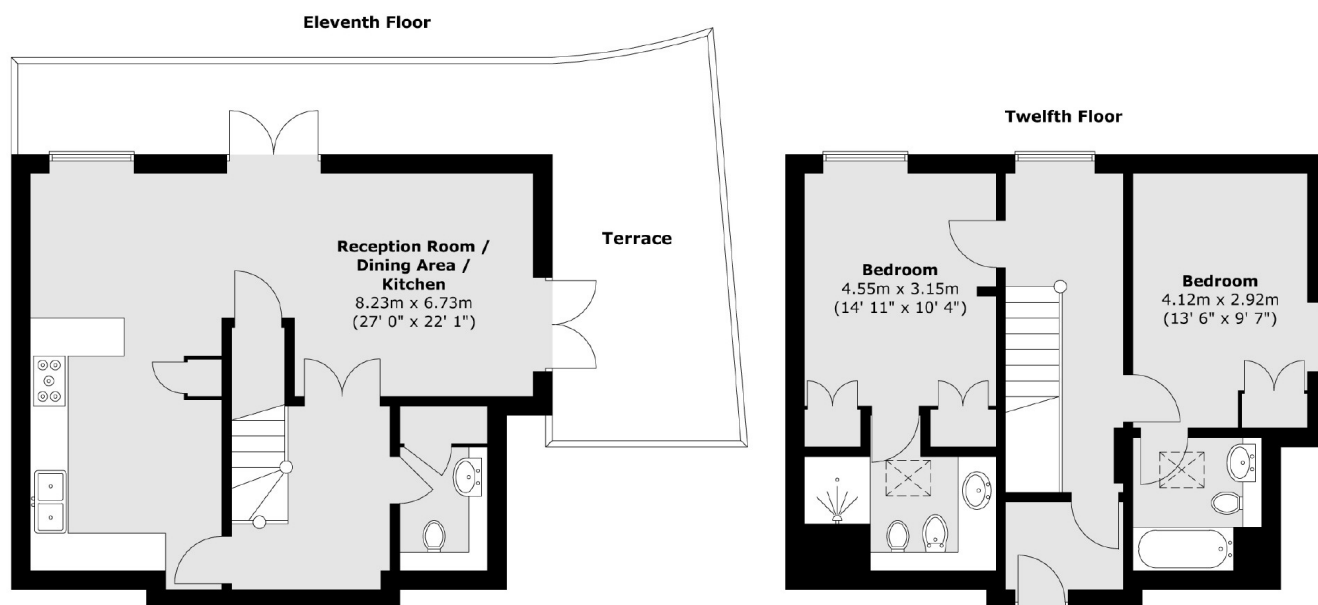


Belvedere Road, SE1

Two bedroom, two bathroom, split level, penthouse apartment within the popular Whitehouse Apartments which offers 24hr concierge, indoor pool and gym facilities.



Belvedere Road, London, SE1



Total area (approx.) : 104.2 sq. m (1122 sq. ft)
Total terrace area (approx.) : 27.1 sq. m (292 sq. ft)