



County Street, SE1

£317,500

A highly attractive third floor flat overlooking the communal gardens below, with a spacious living room and separate kitchen, a large double bedroom and smart three piece bathroom. Permit parking is available. Chain free sale.

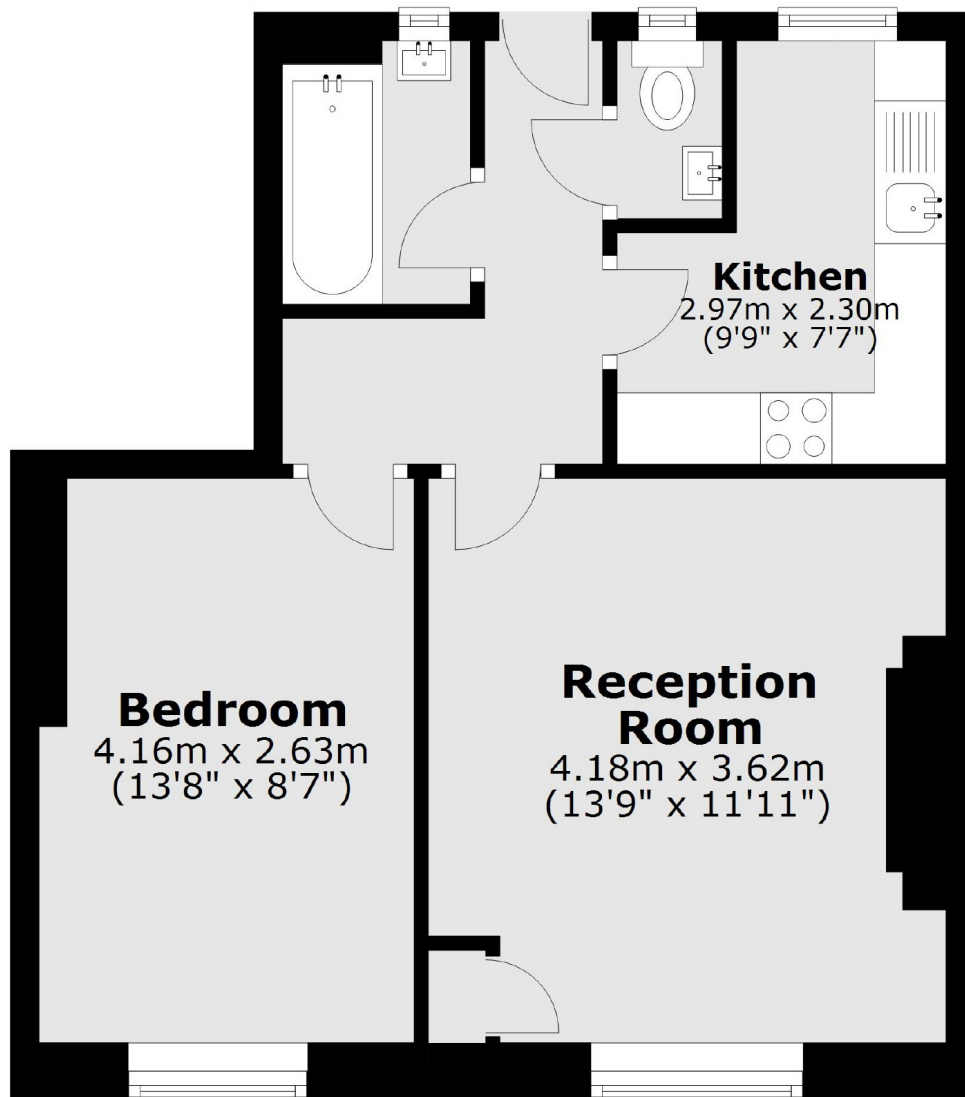
Tucked back off County Street this is a very quiet location, yet very close to both Borough and Elephant & Castle. There are numerous amenities on your doorstep, along hot spots such as Mercato Metropolitano.

Features

- One Double Bedroom
- Modern Kitchen & Bathroom
- Long Lease
- Permit Parking Available
- Excellent Transport Links
- Chain Free Sale

County Street,
London, SE1

Third Floor



Total area: approx. 40.6 sq. metres (437.3 sq. feet)