



Paradise Street, SE16

£675,000

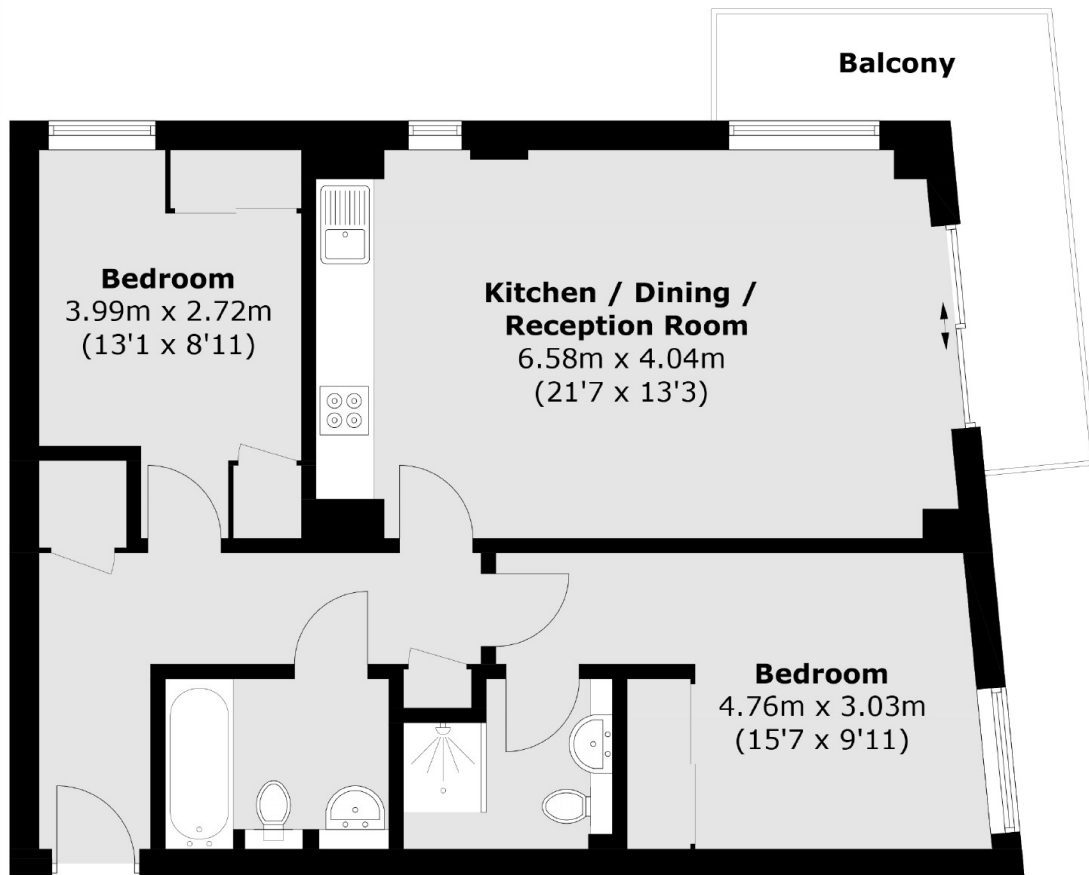
Close to the river, this two double bedroom apartment is immaculately presented with two bathrooms, a spacious open plan kitchen and living space, private balcony and ample storage.

Mission Point is a small friendly block located adjacent to peaceful King's Stairs Gardens with its protected village green status, and inside the King Edward III conservation area yet only 0.2 miles from both Bermondsey and Rotherhithe stations. Overlooking parkland and with glimpses of the river, the apartment is only moments from Southwark Park, the Thames path and cycleway and has a range of shops, cafes and food markets nearby.

Features

- Two Double Bedrooms
- Two Bathrooms
- Private Balcony
- Extremely Quiet Location
- Easy On-Street Parking With Charge Point
- Bike Storage
- Chain Free

Paradise Street, London, SE16



Total area (approx.): 68.5 sq. m (737.3 sq. ft)
Balcony : 7.7 sq. m (82.9 sq. ft)

Dexters

London Bridge
54 Borough High Street
London
SE1 1XL
Sales
020 7650 5 100

Energy Rating: C. We aim to make our particulars both accurate and reliable. However they are not guaranteed; nor do they form part of an offer or contract. If you require clarification on any points then please contact us, especially if you're traveling some distance to view. Please note that appliances and heating systems have not been tested and therefore no warranties can be given as to their good working order.

 **RICS** | Regulated
Estate Agent
and Letting Agent

[dexters.co.uk](https://www.dexters.co.uk)