



Bath Terrace, SE1

£425,000

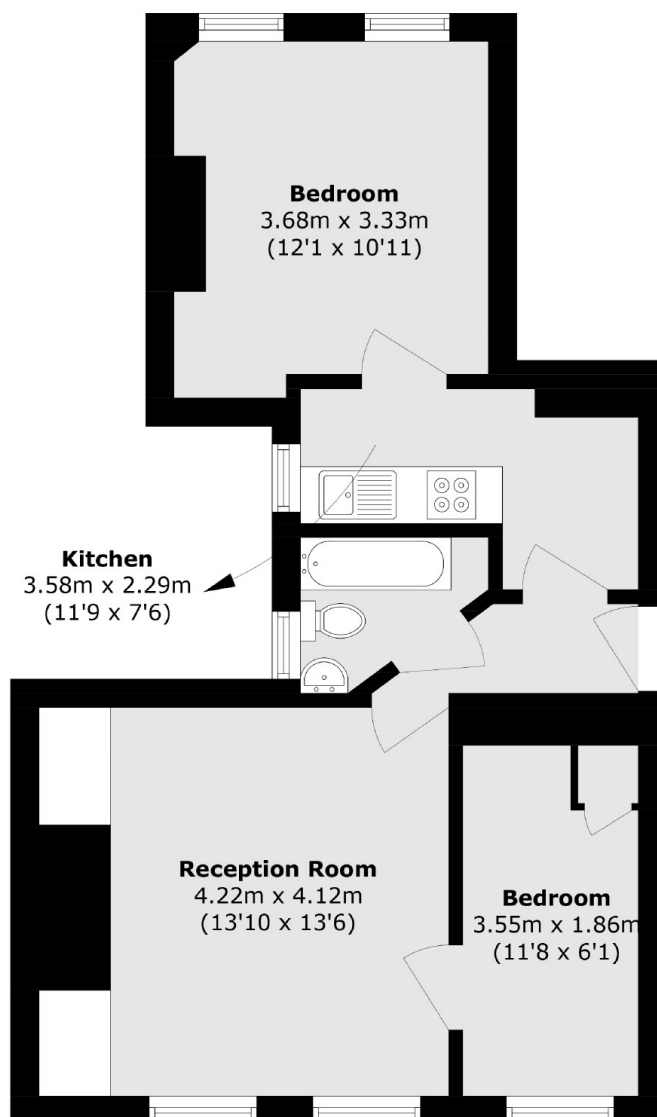
A highly attractive, almost 550 sq ft Victorian Mansion Flat with a separate kitchen and a large living room, a three piece bathroom, two bedrooms, large sash windows and high ceilings, plus ample room for dining and built-in storage.

Bath Terrace is under 0.5 miles from Borough underground & Borough High Street & 0.25 miles from Elephant & Castle. Trinity House is overlooking Newington Gardens, minutes away from the renowned Mercato Metropolitano with many other amenities nearby.

Features

- Victorian Mansion Flat
- Two Bedrooms
- Separate Kitchen
- Large Living Room
- Excellent Transport Links
- Very Centrally Located

Bath Terrace, London, SE1



Total area (approx.): 50.6 sq. m (544.6 sq. ft)