



Marcia Road, SE1

£950,000

A highly attractive, recently refurbished and extended, five double bedroom, mid-terrace, freehold house, split over four floors, with a large double reception room and a separate modern kitchen, two bathrooms, a very generous principal suite and a huge loft conversion, also with en-suite WC. Plus a further downstairs WC and a private rear garden.

Marcia Road is tucked away off the Old Kent Road, in close proximity to the proposed Bakerloo Line extension, Burgess Park and numerous local amenities. Bermondsey and Elephant & Castle are both nearby.

Features

- Freehold House
- Recently Refurbished
- Large Loft Extension
- Five Double Bedrooms
- Two Bathrooms
- Two Additional WCs
- Private Rear Garden
- Permit Parking Available



Marcia Road, SE1

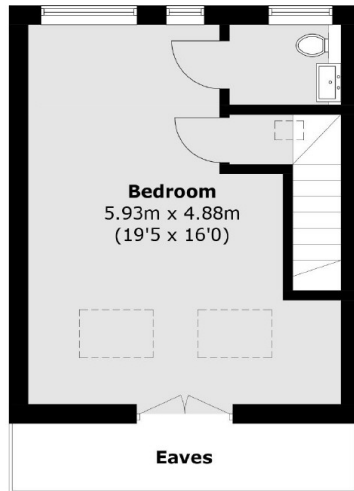
Spread over in excess of 1,600 sq ft, this is a substantial family home that has been recently refurbished to a high standard and extended into the loft. All three bathrooms have been recently renovated and there are new appliances and fittings in the kitchen.

The main living space occupies the ground floor, from front to back, with an attractive bay window to the front, ample space for dining, plus a separate modern kitchen to the back. There is a private garden to the rear, access via both the living room and kitchen.

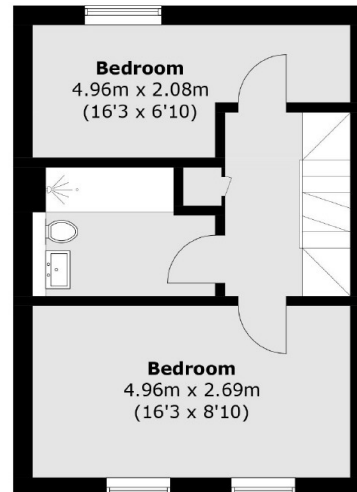
All five bedrooms are good sizes, with ample space for storage, served by three bathrooms, two of which are en-suite, whilst there is an additional WC on the ground floor. The master bedroom benefits from a large walk-in wardrobe, leading through to the en-suite bathroom.



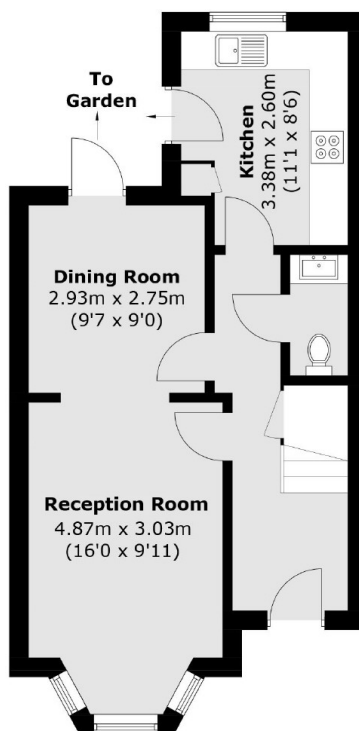
Marcia Road, London, SE1



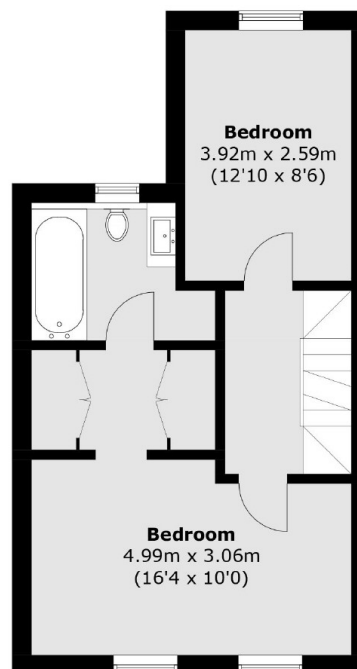
Third Floor



Second Floor



Ground Floor



First Floor

Total area (approx.): 149.2 sq. m (1,605.9 sq. ft)
(Excluding Eaves)