

Valentine Row, SE1

£1,442 Per week

Beautiful four bedroom, three storey townhouse. Set within a serene courtyard garden, the property provides a stylish modern home with impressive features including hard wood flooring, full-height French doors and a large private terrace.

Located close to London's South Bank, the location provides fantastic transport links from Southwark and Waterloo station into Central London. Amongst the areas long list of attractions are The Old and New Vic theatres and The Tate Modern.

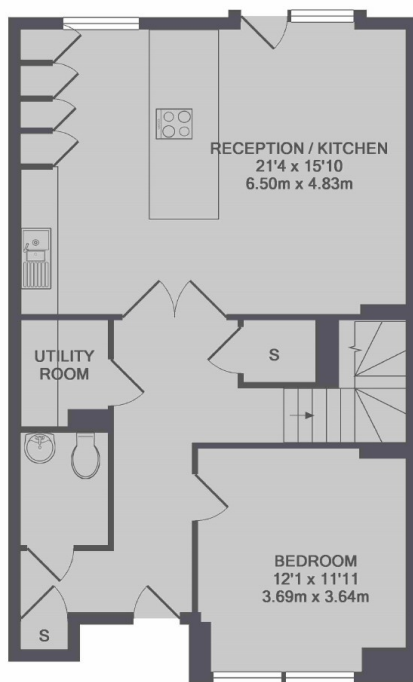
Features

- Four Bedrooms
- Three Storey Townhouse
- Newly Completed
- Private Terrace
- Communal Gardens
- High Quality Finish

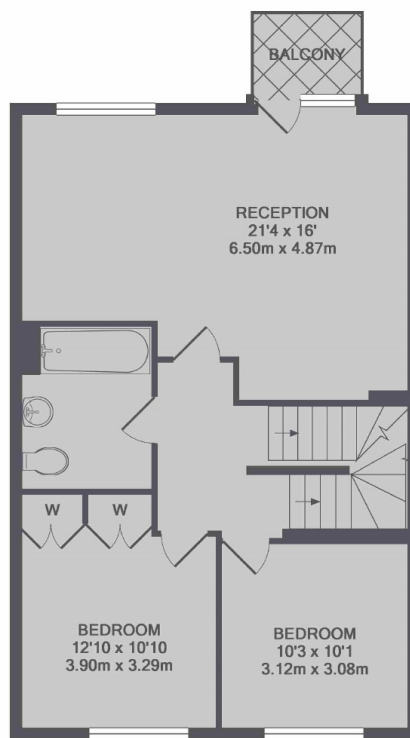
Valentine Row, London, SE1



2ND FLOOR



GROUND FLOOR



1ST FLOOR

TOTAL APPROX. FLOOR AREA 1908 SQ.FT. (177.3 SQ.M.)

Dexters

London Bridge
54 Borough High Street
London
SE1 1XL
Lettings
020 7650 5101

Energy Rating: B. We aim to make our particulars both accurate and reliable. However they are not guaranteed; nor do they form part of an offer or contract. If you require clarification on any points then please contact us, especially if you're traveling some distance to view. Please note that appliances and heating systems have not been tested and therefore no warranties can be given as to their good working order.



[dexters.co.uk](https://www.dexters.co.uk)