



## St. Georges Circus, SE1

**£1,061** Per calendar month

An immaculate, almost 1,200 sq ft, 5th floor apartment with a large open plan kitchen & living room, winter garden, three double bedrooms & two bathrooms, plus secure underground parking, 24 hr concierge, residents' gym, lounge & viewing platform.

Blackfriars Circus is one of SE1's premier modern developments, built in 2017, situated on Blackfriars Road, with easy access to Southwark and the Southbank. Blackfriars Station and the City are just a hop over the bridge.

### Features

- Three Double Bedrooms
- Two Bathrooms
- Winter Garden
- 24 Hour Concierge
- Residents' Gym, Lounge &
- Secure Parking





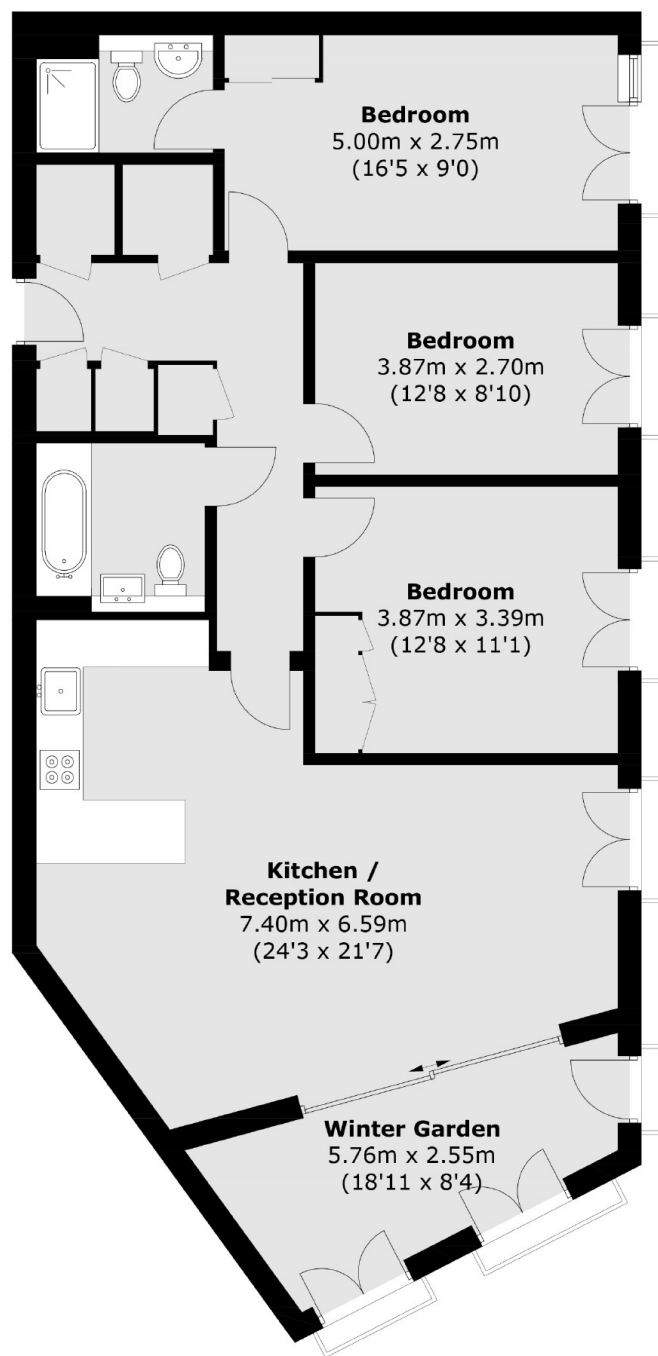
## St. Georges Circus, SE1

An immaculate, almost 1,200 sq ft, 5th floor apartment with a large open plan kitchen & living room, winter garden, three double bedrooms & two bathrooms, plus secure underground parking, 24 hr concierge, residents' gym, lounge & viewing platform.





# St. Georges Circus, London, SE1



Total area (approx.): 109.8 sq. m (1,181.9 sq. ft)  
(Including Winter Garden)

## Dexters

London Bridge  
54 Borough High Street  
London  
SE1 1XL  
Lettings  
020 7650 5101

Energy Rating: B. We aim to make our particulars both accurate and reliable. However they are not guaranteed; nor do they form part of an offer or contract. If you require clarification on any points then please contact us, especially if you're traveling some distance to view. Please note that appliances and heating systems have not been tested and therefore no warranties can be given as to their good working order.

 **RICS** | Regulated  
Estate Agent  
and Letting Agent

dexters.co.uk