



## St. Georges Circus, SE1

£1,107 Per week

**Dexters**



## St. Georges Circus, SE1

An immaculate, almost 1,200 sq ft, 5th floor apartment with a large open plan kitchen & living room, winter garden, three double bedrooms & two bathrooms, plus secure underground parking, 24 hr concierge, residents' gym, lounge & viewing platform.

An immaculate, almost 1,200 sq ft, 5th floor apartment with a large open plan kitchen & living room, winter garden, three double bedrooms & two bathrooms, plus secure underground parking, 24 hr concierge, residents' gym, lounge & viewing platform.

Blackfriars Circus is one of SE1's premier modern developments, built in 2017, situated on Blackfriars Road, with easy access to Southwark and the Southbank. Blackfriars Station and the City are just a hop over the bridge.

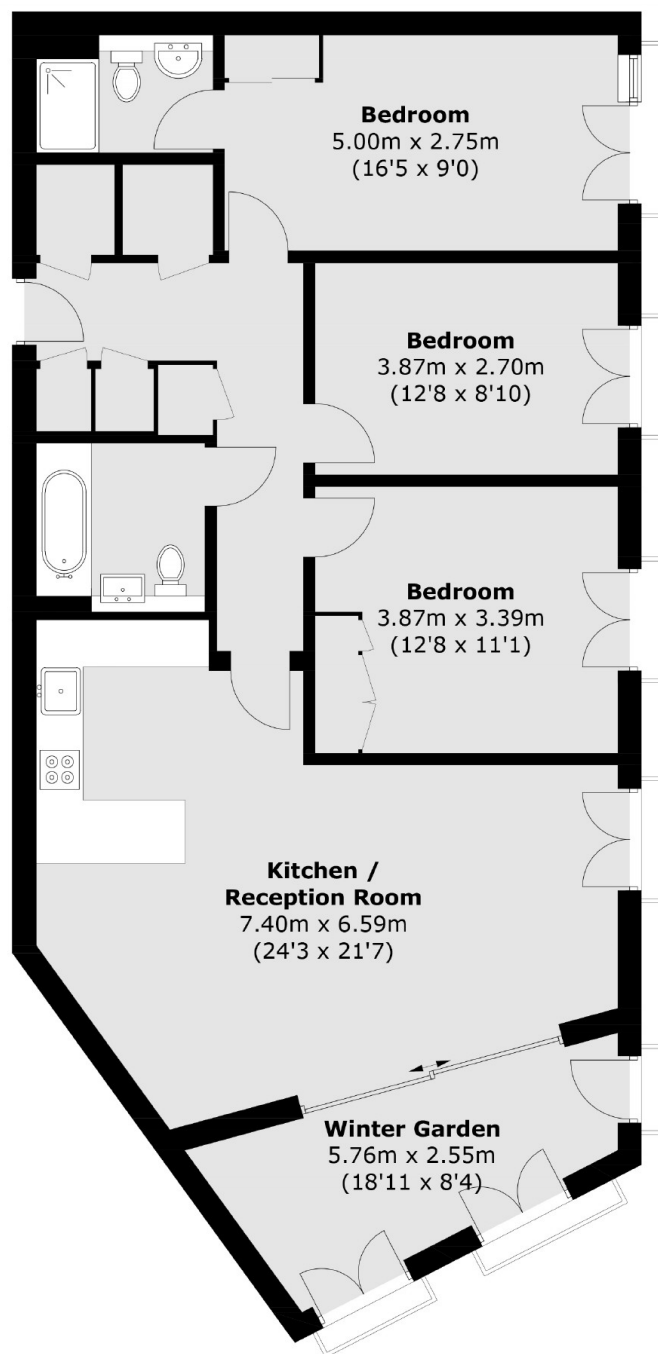
### Features

- Three Double Bedrooms
- Two Bathrooms
- Winter Garden
- 24 Hour Concierge
- Residents' Gym, Lounge &
- Secure Parking





# St. Georges Circus, London, SE1



Total area (approx.): 109.8 sq. m (1,181.9 sq. ft)  
(Including Winter Garden)