



## Redcross Way, SE1

£634 Per week

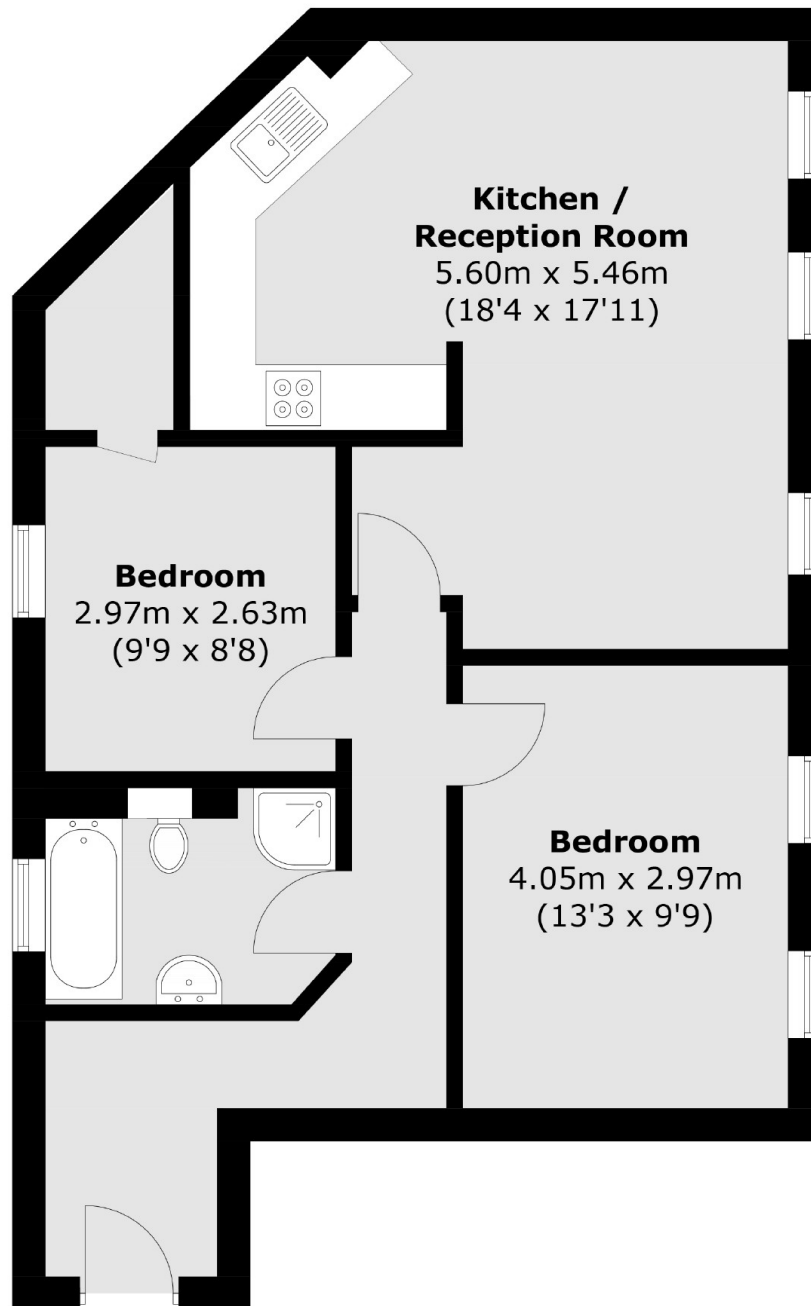
A highly attractive, over 700 sq ft flat, with fantastic views of the Shard and the skyline, a spacious open plan living room and kitchen, with ample room for dining, two generous double bedrooms and a family bathroom.

Triangle Court is enviably located on Redcross Way, tucked back off Southwark Street, moments from Borough Market, London Bridge and the Southbank with excellent transport links across the City.

### Features

- Period Conversion
- Over 700 sq ft
- Two Double Bedrooms
- Open Plan Living Space
- Modern Kitchen
- Fantastic Views

# Redcross Way, London, SE1



Total area (approx.): 65.6 sq. m (706.1 sq. ft)

## Dexters

London Bridge  
54 Borough High Street  
London  
SE1 1XL  
Lettings  
020 7650 5101

Energy Rating: C. We aim to make our particulars both accurate and reliable. However they are not guaranteed; nor do they form part of an offer or contract. If you require clarification on any points then please contact us, especially if you're traveling some distance to view. Please note that appliances and heating systems have not been tested and therefore no warranties can be given as to their good working order.

 **RICS** | Regulated  
Estate Agent  
and Letting Agent

[dexters.co.uk](https://www.dexters.co.uk)