



Blackfriars Road, SE1

£600,000

An immaculately presented almost 850 sq ft, high spec, modern apartment with a large open plan living space, private winter garden, three piece bathroom, ample storage and a generous double bedroom. Offers in excess of £600,000.

Located on Blackfriars Road, with numerous amenities in the vicinity on Bankside, a vibrant social scene, boutique restaurants, bars and cafés. There is easy access to Southwark, Blackfriars Station and the City is just a hop over the bridge.

Features

- Offers in excess of £600,000
- Open Plan Living
- Winter Garden
- Residents' Gym
- 24 Hour Concierge
- Panoramic Residents' Terrace
- Valid EWS1 Form
- Chain Free Sale



Blackfriars Road, SE1

Conquest Tower is one of SE1's premier new developments, finished to a very high specification, with a 24 hour concierge, residents' gym and a panoramic roof terrace.

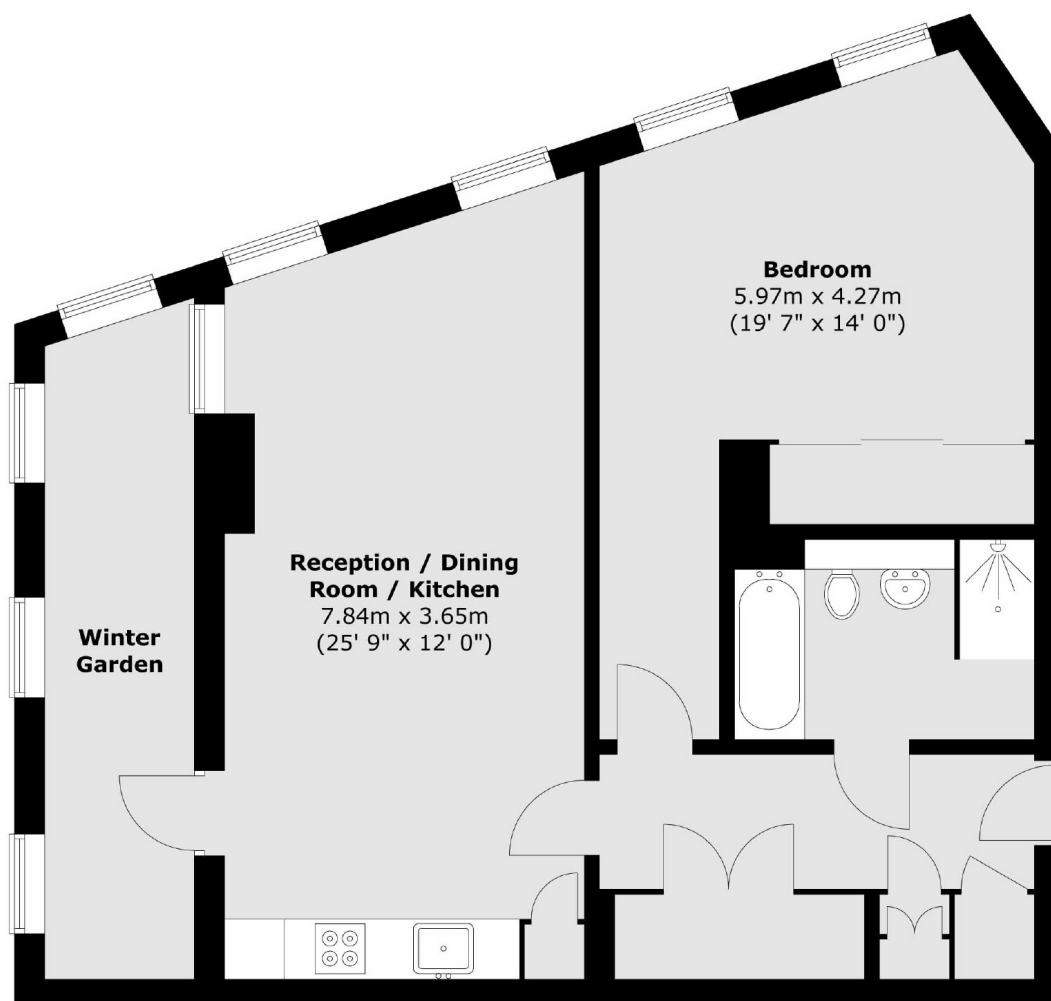
The apartment is a fantastic size with a generous double bedroom, large bathroom, one of which is en-suite, a sizeable open plan living area and a private winter garden.

There is a great flow to the property and fantastic light due to the floor to ceiling windows and southerly aspect, with light starting in the bedrooms and the sun setting on the side of the main living space and winter garden.



Blackfriars Road, London, SE1

First Floor



Total area (approx.) : 78.3 sq. m (843 sq. ft)

Dexters

London Bridge
54 Borough High Street
London
SE1 1XL
Sales
020 7650 5 100

Energy Rating: B. We aim to make our particulars both accurate and reliable. However they are not guaranteed; nor do they form part of an offer or contract. If you require clarification on any points then please contact us, especially if you're traveling some distance to view. Please note that appliances and heating systems have not been tested and therefore no warranties can be given as to their good working order.

 **RICS** | Regulated
Estate Agent
and Letting Agent

[dexters.co.uk](https://www.dexters.co.uk)