



## Green Walk, SE1

### £650,000

An almost 1,200 ft<sup>2</sup>, split level apartment in the former Hartley's Jam Factory, with a large living room, hard wood floors and exposed brick, a separate eat in kitchen, two double bedrooms and two bathrooms. Offers in excess of £650,000

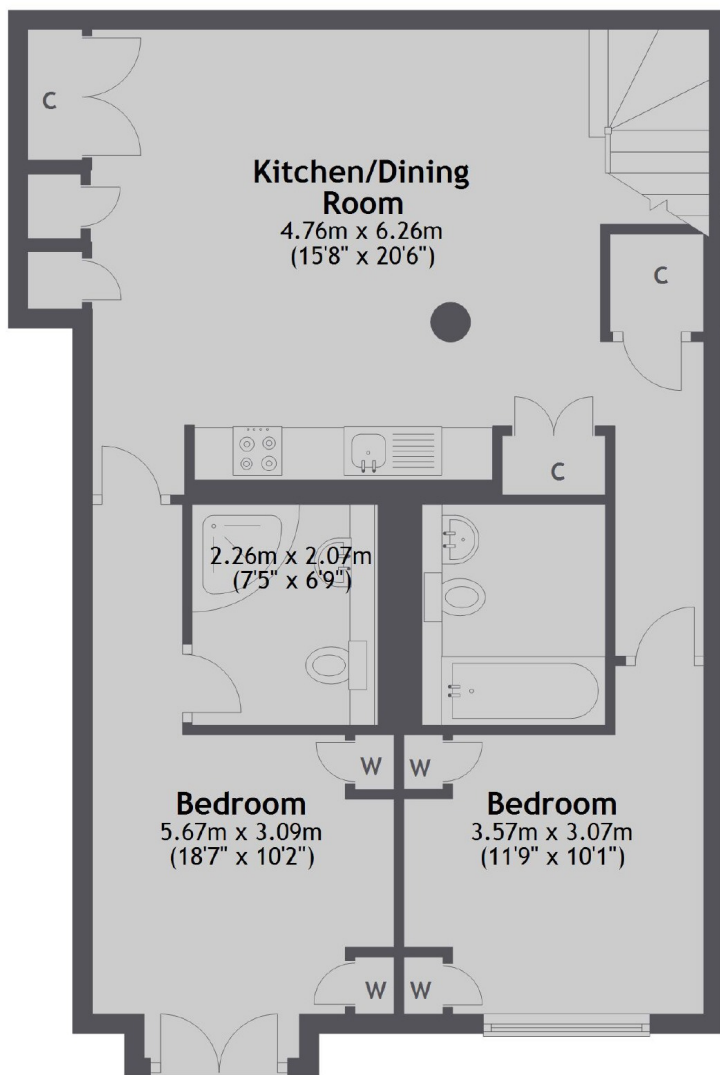
The Jam Factory is one of SE1's most desirable developments with a blend of character & contemporary design, set on Rothsay Street, moments from Bermondsey Street, with London Bridge, Borough Market & the Southbank just beyond.

### Features

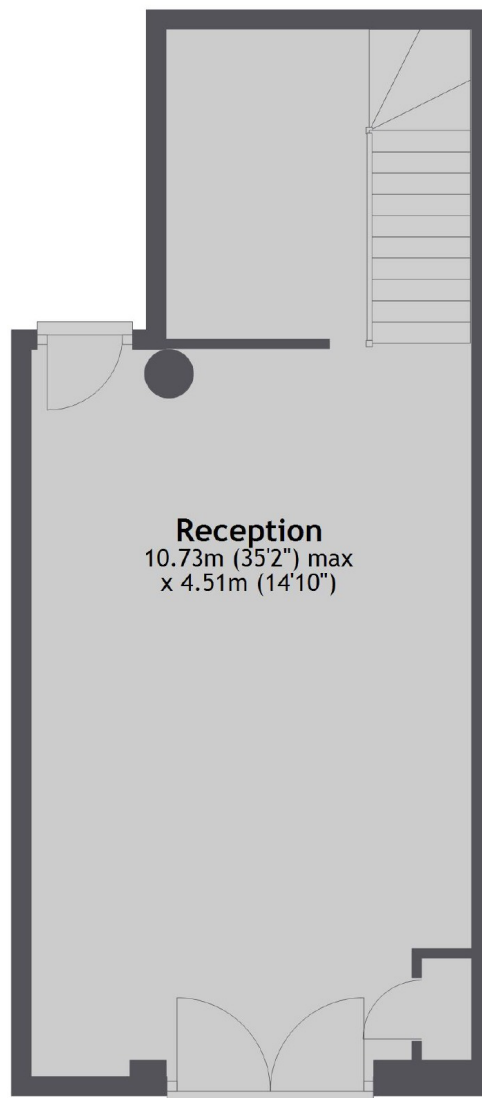
- OIEO £650,000
- Split Level Apartment
- Private Gated Development
- Large Eat-in Kitchen
- Separate Living Room
- Residents' Porter
- Chain Free Sale
- Cash Buyers Only

# Green Walk, London, SE1

Lower Ground Floor



Upper Ground Floor



Total area: approx. 109.4 sq. metres (1177.1 sq. feet)