



Aquinas Street, SE1

£1,100,000

Situated on a beautiful leafy street in the Heart of SE1, this immaculately presented and historic freehold House is arranged over two floors, with a front study room, a spacious living room & recessed kitchen, a private south-facing garden, along with access to a cellar and loft space. Sold chain free.

Aquinas Street is tucked away, off Stamford Street, less than 0.4 miles from Both Waterloo & Southwark Stations, with the South Bank, Lower Marsh, The Cut and numerous other attractions on your doorstep, such as The National Theatre, The BFI, Hayward Gallery, Royal Festival Hall, Tate Modern, Oxo Tower and the London Eye.

Features

- Two Storey Freehold House
- Grade II Listed - Built in 1911
- Sash Windows & High Ceilings
- South Facing Garden
- Excellent Transport Links
- Very Central Location
- Chain Free Sale



Aquinas Street, SE1

Aquinas Street is one of the area's most sought after roads, running parallel to Stamford Street, linking Coin Street and Duchy Street. It has a very pleasing regimented character, created by unified terraces on either side and the common use of red brick and plain clay tile.

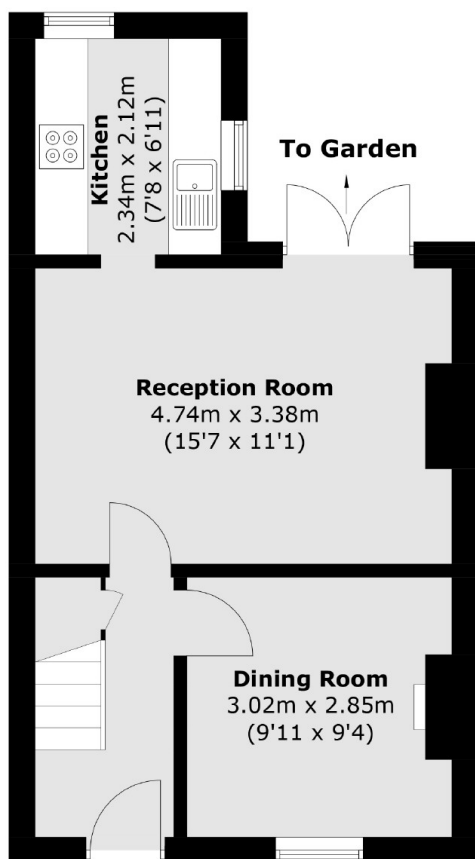
The South side is comprised of two Grade II listed terraces built by the Duchy of Cornwall Estate prior to First World War and linked by a decorative archway. This property is particularly favoured by its heraldic Fleur de Lys, original railings, doors and sash windows.

The house itself offers a separate study room to the front, with a lovely original fireplace, a larger living room and recessed kitchen to the rear, hard wood floors and high ceilings, as well as direct access to a walled courtyard garden.

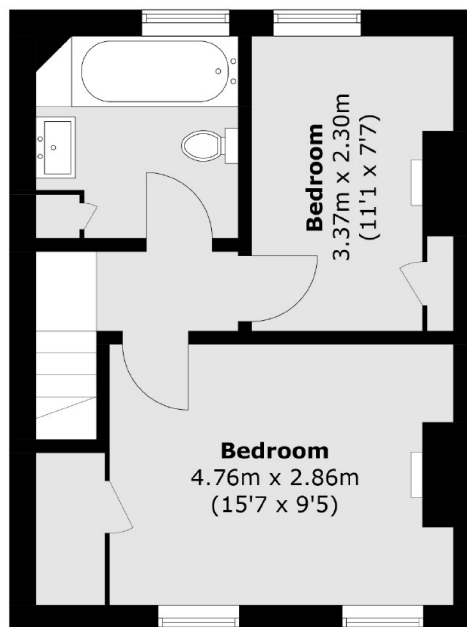
There are two bedrooms on the first floor, with ample storage and further feature fireplaces together with a three piece family bathroom and access to a substantial loft space, with extension potential subject to planning. Similarly there is a cellar beneath the house, offering further storage space.



Aquinas Street, London, SE1



Ground Floor



First Floor

Total area (approx.): 67.7 sq. m (728.7 sq. ft)