



Sumner Street, SE1

£500,000

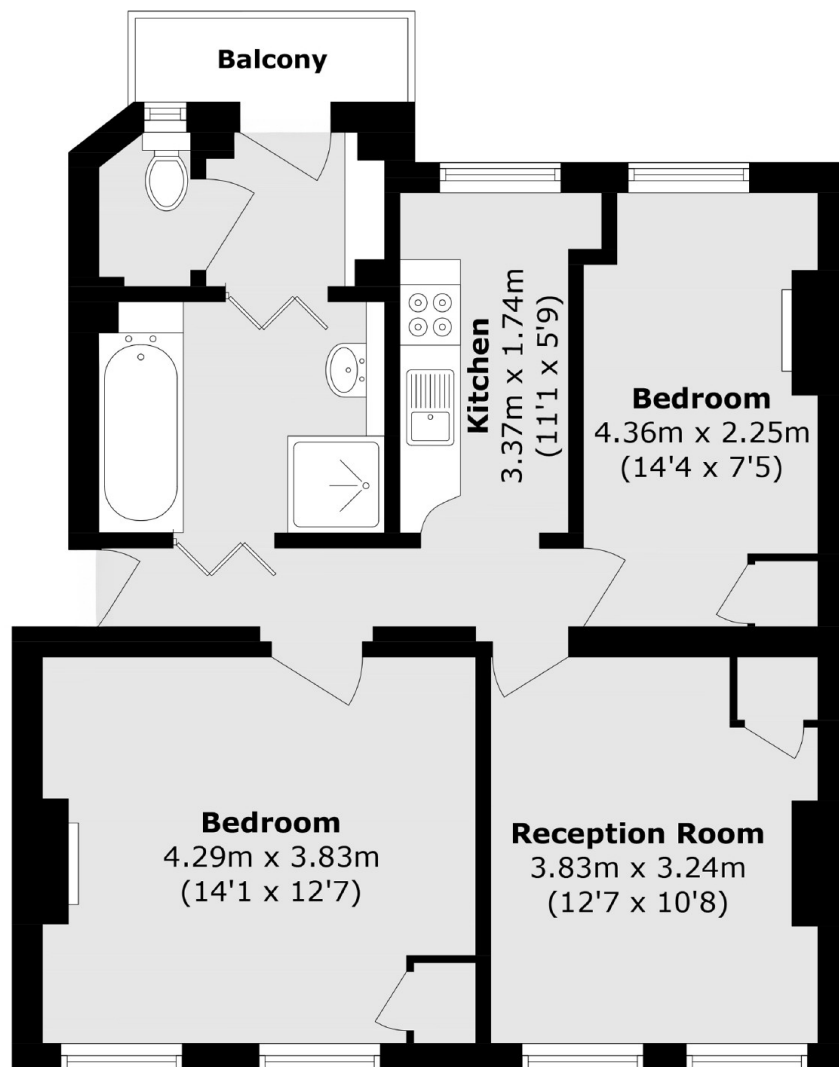
A delightful two double bedroom flat in a charming Corporation of London development, with attractive period features, sash windows, parquet floors, a separate kitchen and living room, plus a private balcony.

The Sumner Buildings are particularly well located. The Southbank, River Thames, Globe Theatre & Borough Market are moments away. The closest stations are Blackfriars, Southwark & London Bridge, with Waterloo just beyond.

Features

- Two Double Bedrooms
- Spacious Kitchen & Living Room
- Sash Windows & Parquet Flooring
- Private Balcony
- Chain Free Sale

Sumner Street, London, SE1



Total area (approx.): 63.8 sq. m (686.7 sq. ft)

Balcony area (approx.): 2.2 sq. m (23.7 sq. ft)