



## Southwark Bridge Road, SE1

### £750,000

An immaculately presented, almost 900 sq ft apartment, with an open plan living room & kitchen, ample room for dining, a generous winter garden, two double bedrooms & two bathrooms. Plus access to a residents' gym, cinema room & 24 hr concierge.

251 Southwark Bridge Road is incredibly well located, moments from Elephant and Castle station and only 0.3 miles from Borough Station. A wide range of shops, cafés, food markets and delis are close by, including the vibrant Mercato Metropolitano.

### Features

- 24 Hour Concierge
- Gym & Cinema Room
- Two Double Bedrooms
- Two Bathrooms
- Winter Garden
- 4th Floor Apartment
- EWS1 - A2 Rating



## Southwark Bridge Road, SE1

This apartment is finished to a high specification with under floor heating, a fully fitted kitchen, with Bosch appliances, including a dishwasher and plenty of room for additional storage.

The main living space is a great size, with a large seating area, ample space for dining, the kitchen and direct access to the winter garden, set up as an additional living space.

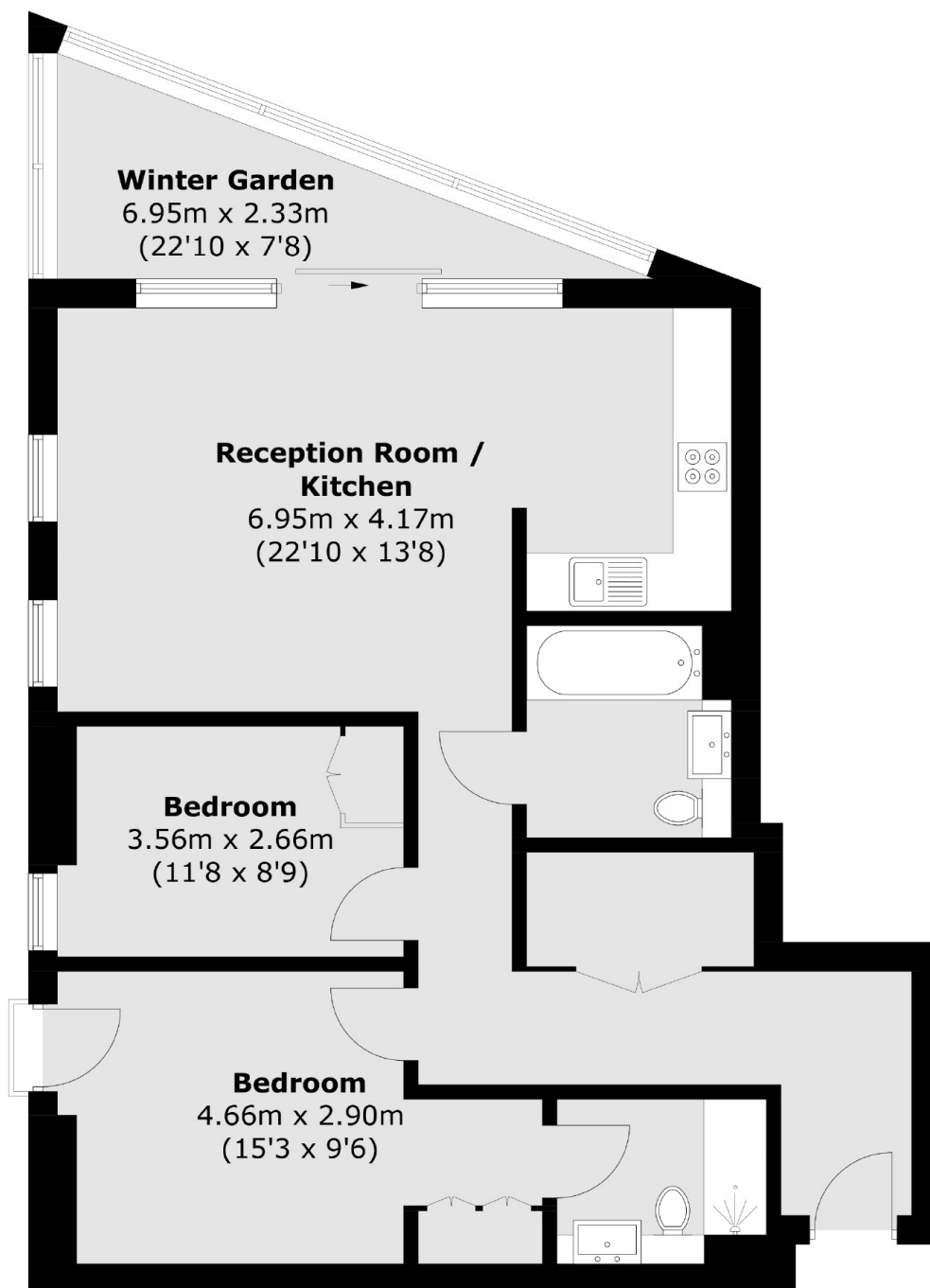
Both bedrooms are generous doubles, each with built-in wardrobes. The master bedroom benefits from an en-suite shower room, whilst there is an additional guest bathroom, accessed from the hallway.

The building is one of SE1's premier developments with a 24 hour concierge, residents' lounge, cinema room and gym.





# Southwark Bridge Road, London, SE1



Total area (approx.): 82.8 sq. m (891.2 sq. ft)  
(Including Winter Garden)

## Dexters

London Bridge  
54 Borough High Street  
London  
SE1 1XL  
Sales  
020 7650 5 100

Energy Rating: . We aim to make our particulars both accurate and reliable. However they are not guaranteed; nor do they form part of an offer or contract. If you require clarification on any points then please contact us, especially if you're traveling some distance to view. Please note that appliances and heating systems have not been tested and therefore no warranties can be given as to their good working order.

 **RICS** | Regulated  
Estate Agent  
and Letting Agent

[dexters.co.uk](https://www.dexters.co.uk)