



Risborough Street, SE1

£525,000

A very stylish apartment with a substantial private roof terrace, with views of the Shard, a spacious open plan living room and kitchen, a generous double bedroom, ample storage and a three piece bathroom.

Risborough Street is very centrally located, just off Union Street within 0.2 miles of Southwark, Borough & London Bridge, with access to the Northern, Bakerloo & Jubilee lines. Nearby are numerous shops bars & cafés plus the South Bank & Borough Market

Features

- One Double Bedroom
- Very High Spec
- Large Private Terrace
- Long Lease & Low Service Charges
- Great Transport Links
- Chain Free Sale



Risborough Street, SE1

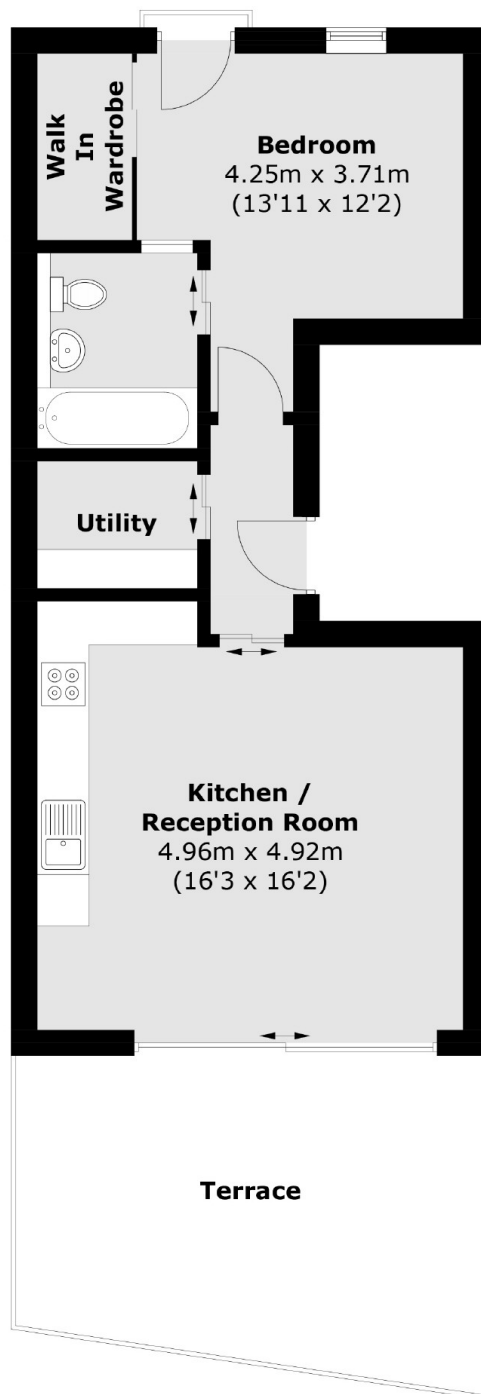
The apartment has been cleverly designed with recessed lighting, underfloor heating, solid oak flooring and high spec fittings throughout - from Lightwave automated lighting (largely LED) and a Heatmiser Smart Phone controlled heating system, through to an integrated Sonos music system.

The Nobilia German kitchen is generously proportioned with plenty of storage, fully fitted Bosch appliances, a Quooker boiling water tap, de-scaling unit, double oven and a central island, providing ample space for food preparation

The bedroom is a great size with TV and Internet points and a large walk in wardrobe. There is a separate three piece bathroom, access via the hallway.



Risborough Street, London, SE1



Total area (approx.): 48.9 sq. m (526.3 sq. ft)
Terrace: 19.1 sq. m (205.6 sq. ft)