

The Cut, SE1

£600,000

A highly attractive, split level flat, with parquet flooring, a large living room and a generous kitchen-diner on the lower floor, plus three double bedrooms, a three piece family bathroom and ample built-in storage. This is a chain free sale. Offers in excess of £600,000.

Enviably located on the Cut, with a plethora of shops, restaurants and cafés on your doorstep, moments from Waterloo Station, Lower Marsh and the South Bank, with excellent links across the City.

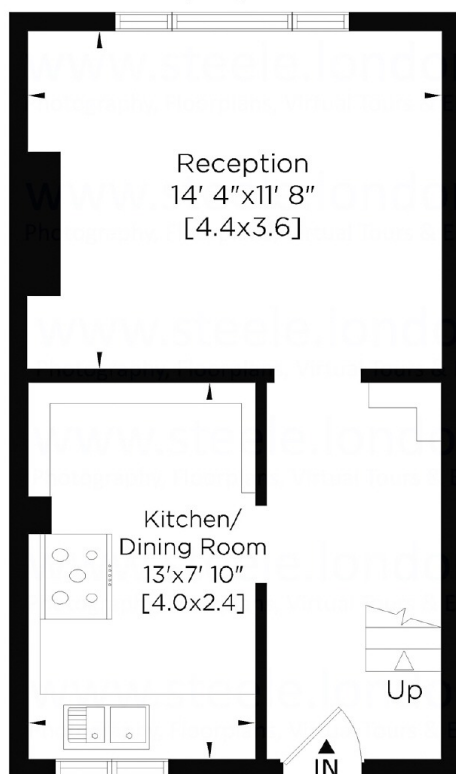
Features

Offers in excess of £600,000
Split Level Flat
Parquet Flooring
Three Double Bedrooms
Large Living Room
Kitchen-Diner
Chain Free Sale

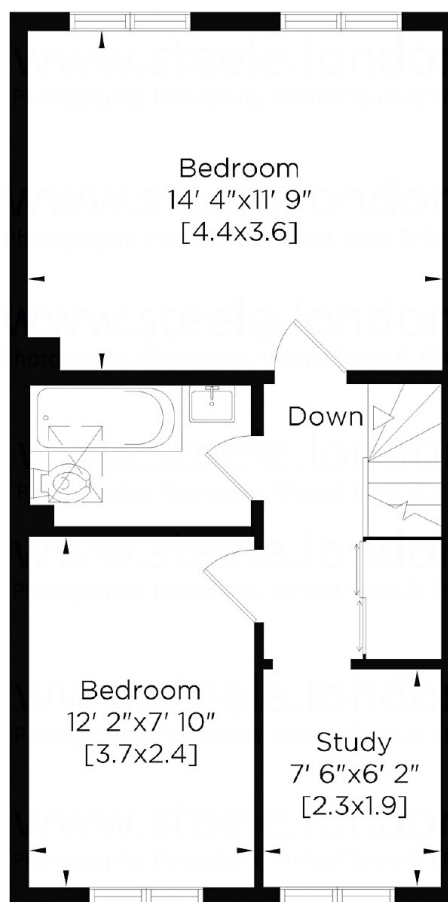
The Cut, London, SE1

The Cut SE1
Gross Internal Area: 
73 Sq. metres - 785 Sq. feet

Whilst every attempt has been made to ensure the accuracy of this Lettings floor plan, measurements of doors, windows, rooms and Sq./footage are approximate. For identification purposes only. Walls with small angles drawn straight. Not to be used as part of the decision to buy. You must recheck all details before purchase and only purchase when you have confirmed them. Price on application for a 90 day licence to use this plan. ©14022022 No appliances tested/Not to scale. Video, Photography, Floor Plans, Virtual Tours, EPC & Inventory, by www.steele.london - Email: patricia@steele.london - Tel: 07847 219401



Second Floor



Third Floor

Dexters

London Bridge
54 Borough High Street
London
SE1 1XL
Sales
020 7650 5 100

Energy Rating: . We aim to make our particulars both accurate and reliable. However they are not guaranteed; nor do they form part of an offer or contract. If you require clarification on any points then please contact us, especially if you're traveling some distance to view. Please note that appliances and heating systems have not been tested and therefore no warranties can be given as to their good working order.



dexters.co.uk