



Weald Close, SE16

£365,000

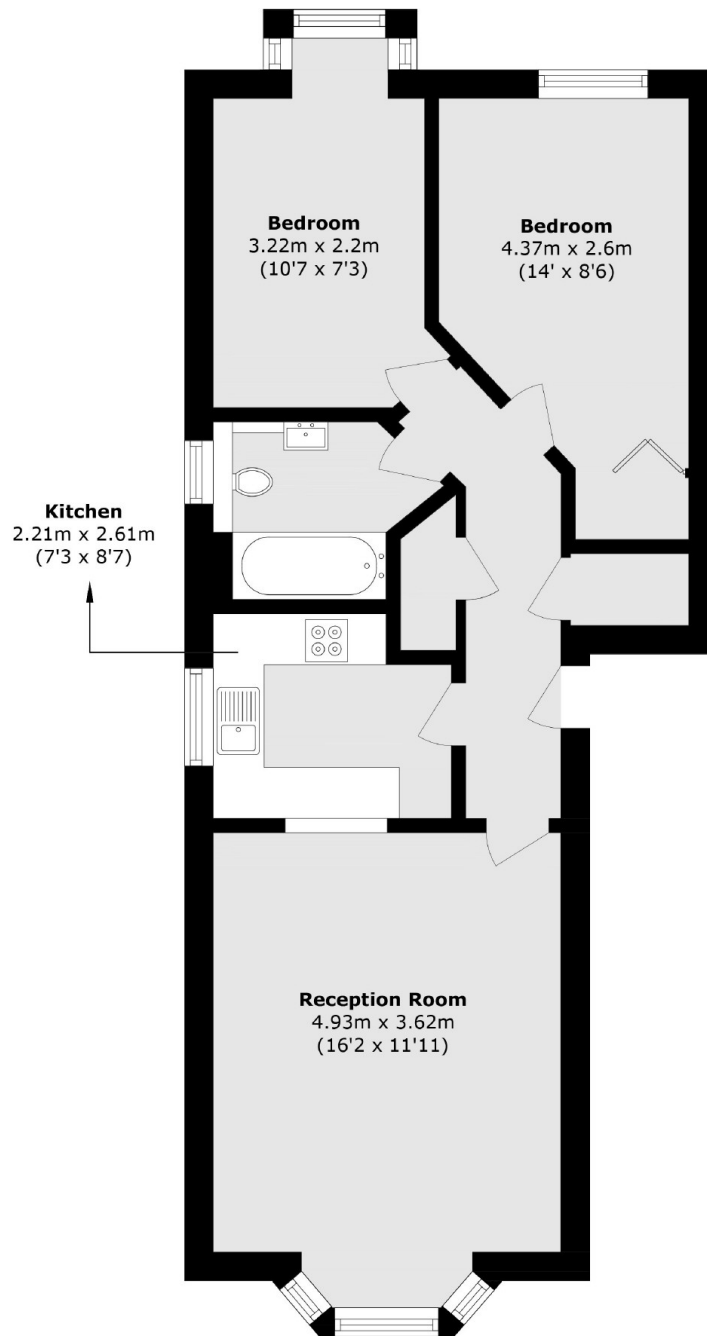
Situated within this quiet development, this two double bedroom flat in excellent condition with a large living room, separate fully fitted kitchen, modern bathroom, ample storage, plus well-maintained communal gardens and allocated parking.

Weald Close is enviably located, only 0.3 miles from South Bermondsey station and 0.8 miles from Bermondsey station. A wide range of shops, cafés and restaurants are also close by.

Features

- Two Bedrooms
- Double Glazed & Secure Entry
- Allocated Parking
- Great Location
- Communal Gardens
- Long Lease

Weald Close, London, SE16



Total area (approx.): 52.3 sq. m (562.9 sq. ft)