



Redcross Way, SE1

£575,000

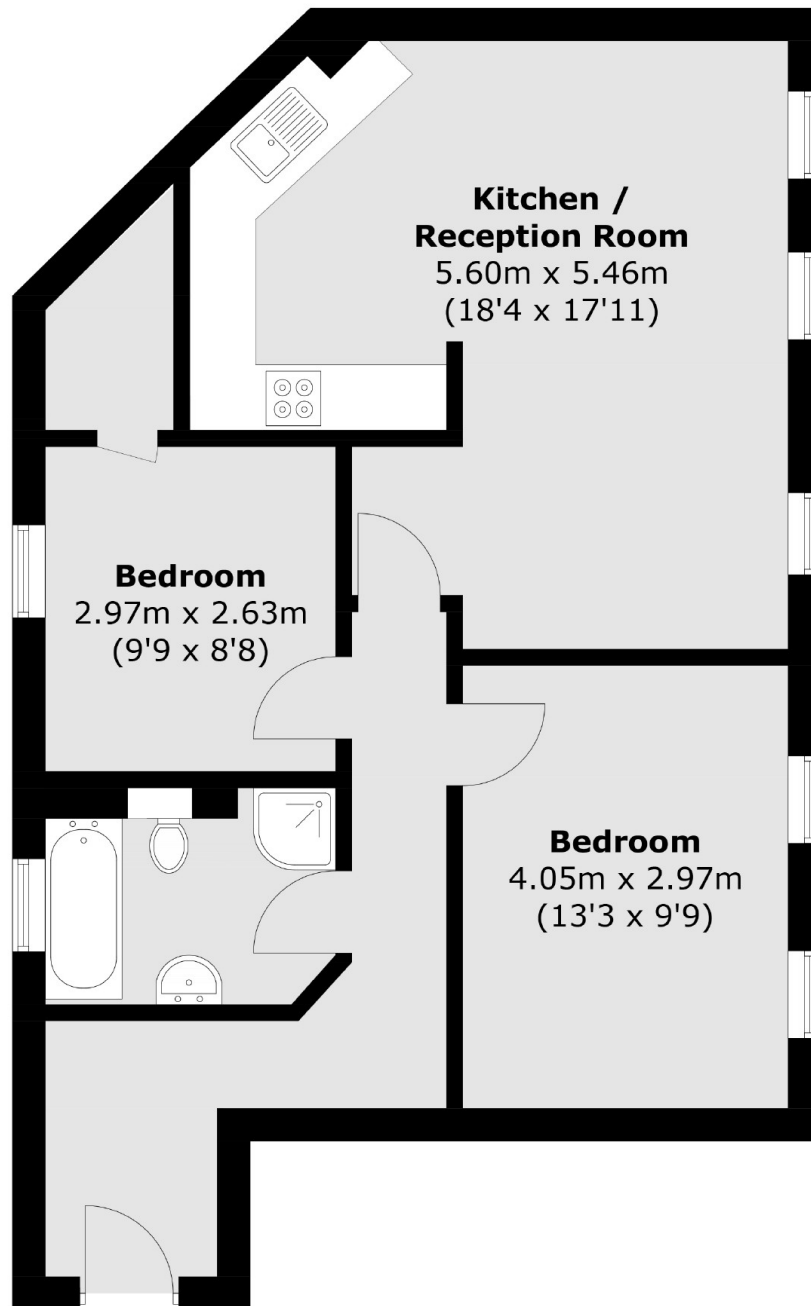
A highly attractive, over 700 sq ft flat, with fantastic views of the Shard and the skyline, a spacious open plan living room and kitchen, with ample room for dining, two generous double bedrooms and a family bathroom. This is a chain free sale. Offers in excess of £575,000

Triangle Court is enviably located on Redcross Way, tucked back off Southwark Street, moments from Borough Market, London Bridge and the Southbank with excellent transport links across the City.

Features

- Offers in excess of £575,000
- Period Conversion
- Over 700 sq ft
- Two Double Bedrooms
- Open Plan Living Space
- Fantastic Views
- Chain Free Sale

Redcross Way, London, SE1



Total area (approx.): 65.6 sq. m (706.1 sq. ft)

Dexters

London Bridge
54 Borough High Street
London
SE1 1XL
Sales
020 7650 5 100

Energy Rating: C. We aim to make our particulars both accurate and reliable. However they are not guaranteed; nor do they form part of an offer or contract. If you require clarification on any points then please contact us, especially if you're traveling some distance to view. Please note that appliances and heating systems have not been tested and therefore no warranties can be given as to their good working order.

 **RICS** | Regulated
Estate Agent
and Letting Agent

[dexters.co.uk](https://www.dexters.co.uk)