



## Blackfriars Road, SE1

### £950,000

An immaculately presented 20th Floor Apartment with incredible views, spread over 960 sq ft, with high spec modern fittings throughout, a large open plan living space, a private winter garden, two double bedrooms, two bathrooms and ample storage.

Located on Blackfriars Road, with numerous amenities in the vicinity on Bankside, a vibrant social scene, boutique restaurants, bars and cafés. There is easy access to Southwark, Blackfriars Station and the City is just a hop over the bridge.

### Features

- Open Plan Living
- Two Bedrooms & Two Bathrooms
- 960 Square Ft
- 24 Hour Concierge & Gym Facilities
- 20th Floor with stunning views
- South-facing winter garden
- Comfort Cooling/Underfloor heating



## Blackfriars Road, SE1

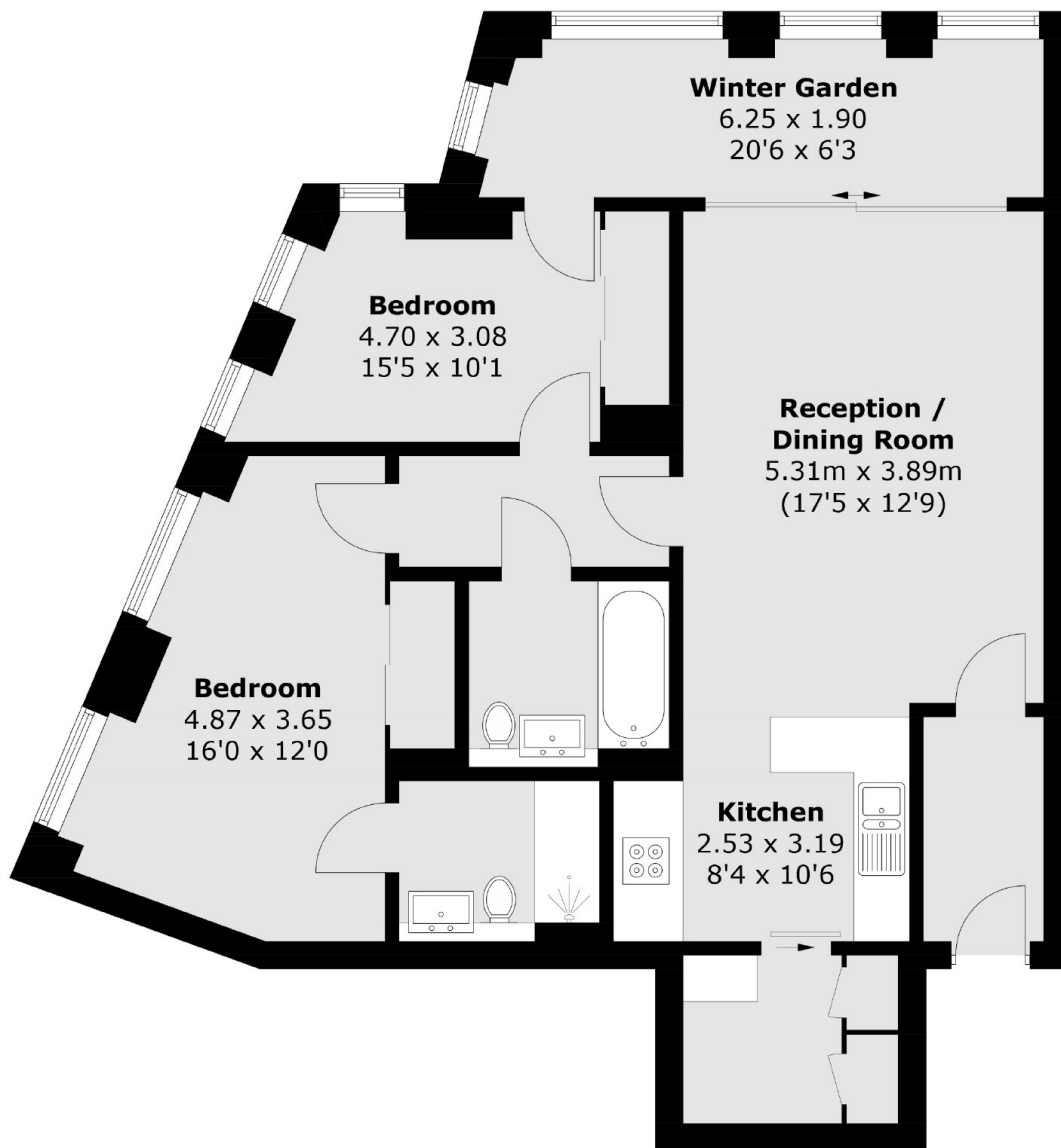
Conquest Tower is one of SE1's premier new developments, finished to a very high specification, with a 24 hour concierge, residents' gym and a panoramic communal roof terrace.

The apartment is unusually spacious with a very large entrance hall, two generous double bedrooms, two bathrooms, one of which is en-suite, a sizeable open plan living area and a private winter garden.

There is a great flow to the property and fantastic light due to the floor to ceiling windows, open aspect and fantastic skyline views across the City.



# Blackfriars Road, London, SE1



Total area (approx.): 89.2 sq. m (960.1 sq. ft)

## Dexters

London Bridge  
54 Borough High Street  
London  
SE1 1XL  
Sales  
020 7650 5 100

Energy Rating: . We aim to make our particulars both accurate and reliable. However they are not guaranteed; nor do they form part of an offer or contract. If you require clarification on any points then please contact us, especially if you're traveling some distance to view. Please note that appliances and heating systems have not been tested and therefore no warranties can be given as to their good working order.

 **RICS** | Regulated  
Estate Agent  
and Letting Agent

dexters.co.uk