



Tower Bridge Road, SE1

£350,000

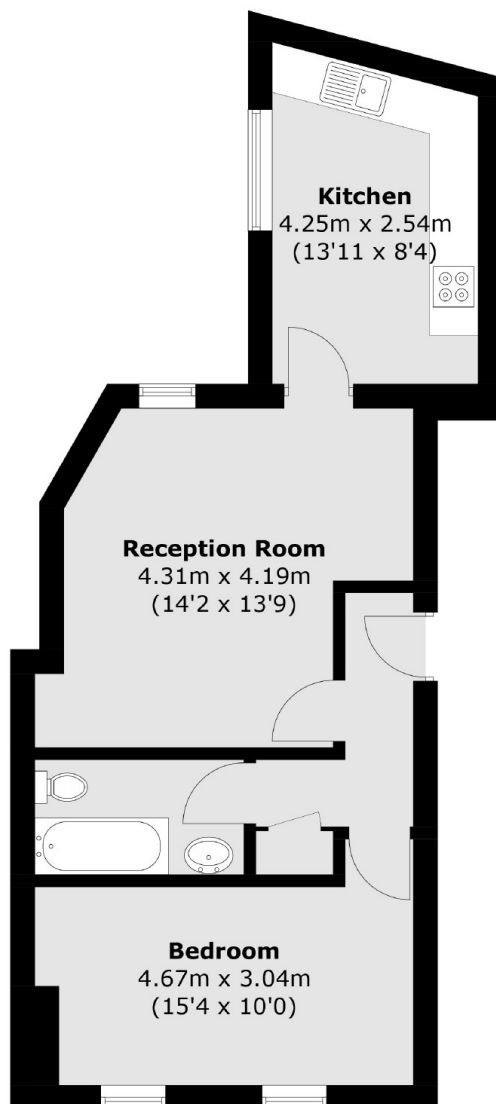
A highly attractive, top floor, period conversion, spread over 515 sq ft, with a large living room, a spacious kitchen-diner, a generous double bedroom and three piece bathroom, plus ample storage. Sold chain free.

Enviably located on Tower Bridge Road, moments away from the vibrant Bermondsey Street, London Bridge Station, Borough Market Shad Thames and the South Bank. There are numerous attractions and amenities on your doorstep and excellent transport links across the City.

Features

- Period Conversion
- Top Floor Flat
- One Double Bedroom
- Large Living Room
- Separate Kitchen
- Chain Free Sale

Tower Bridge Road, London, SE1



Total area (approx.): 47.9 sq. m (515.6 sq. ft)

Dexters

London Bridge
54 Borough High Street
London
SE1 1XL
Sales
020 7650 5 100

Energy Rating: . We aim to make our particulars both accurate and reliable. However they are not guaranteed; nor do they form part of an offer or contract. If you require clarification on any points then please contact us, especially if you're traveling some distance to view. Please note that appliances and heating systems have not been tested and therefore no warranties can be given as to their good working order.

 **RICS** | Regulated
Estate Agent
and Letting Agent

[dexters.co.uk](https://www.dexters.co.uk)