



Bell Yard Mews, SE1

£2,295,000

A spectacular duplex Penthouse Apartment with far reaching views across the City and westwards towards the London Eye, finished to a very high specification throughout, flooded with natural light, with a substantial living room and kitchen, a very large private roof terrace, two further balconies, three double bedrooms and three bathrooms.

Enviably located, tucked back off the vibrant Bermondsey Street, moments from its many shops, restaurants and galleries. London Bridge Station, the South Bank, the Shard, Maltby Street Market and Borough Market are all within easy reach.

Features

- Duplex Penthouse Apartment
- Incredible Skyline Views
- Three Double Bedrooms
- Three Bathrooms
- Large Roof Terrace & Two Balconies
- Valid EWS1 Form
- Chain Free Sale
- Offers in excess of £2,295,000



Bell Yard Mews, SE1

Spread over almost 2,000 square feet, there is a wonderful sense of space throughout the property. It has been designed very thoughtfully with high quality fittings throughout, Kite wood flooring, air conditioning, lighting, audio and visual all controlled by a Smart Home, Control 4 system.

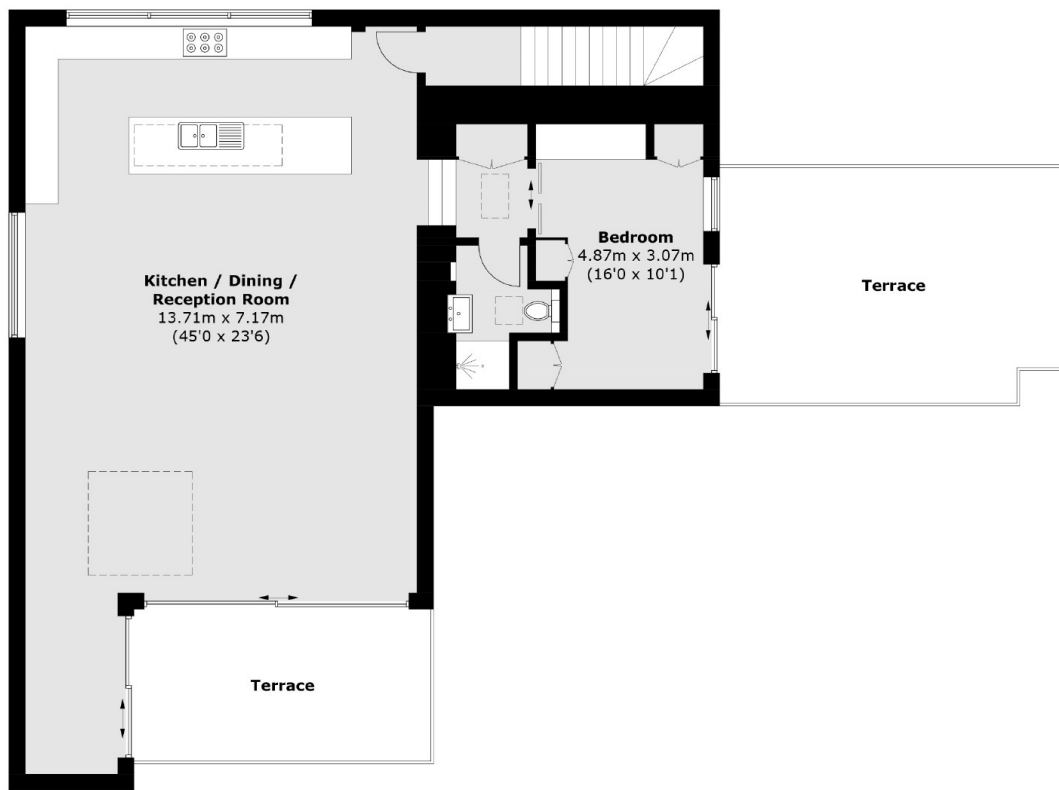
The living space stretches across the full width of the apartment, leading directly out onto a substantial west-facing terrace, accessed via full width bi-fold doors, with a triple aspect, multiple skylights and views highlighting the very best of the London skyline.

The Eggersman kitchen is a chef's dream with high spec integrated Miele and VZug appliances, a beautiful ceramic worktop, double oven, warming and Sous Vide drawers, as well as a three seater breakfast bar.

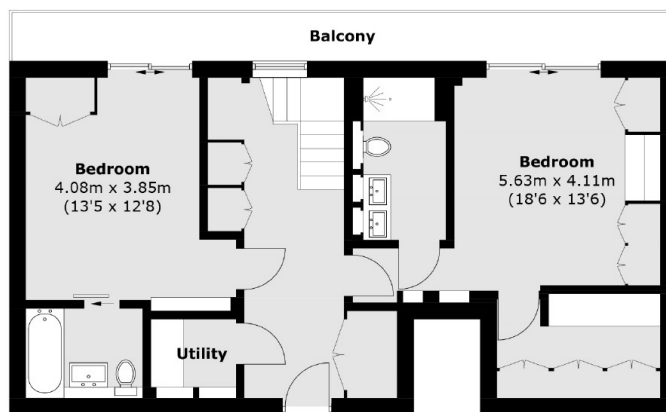
All three bedrooms are very spacious with extensive built-in storage. The master bedroom benefits from a luxurious dressing room and en-suite bathroom, whilst there are two further bathrooms, one of which is also en-suite.



Bell Yard Mews, London, SE1



Fifth Floor



Fourth Floor

Total area (approx.): 182.1 sq. m (1960.1 sq. ft)
Balcony / Terrace: 52.7 sq. m (567.3 sq. ft)