



Mill Street, SE1

£950,000

Boasting incredible views, this three double bedroom flat offers ample living space, separate kitchen, two bathrooms, additional guest WC, private balcony, communal roof terrace, concierge facilities and secure off street parking.

Vogans Mill Wharf is enviably located between Mill Street and St Saviour's Docks in Shad Thames, with easy access to London Bridge, and Bermondsey stations, Bank Side and Borough Market.

Features

- Three Bedrooms
- Two Bathrooms
- 24 hour Concierge
- Secure Off-Street Parking
- Fantastic Location
- Incredible Views



Mill Street, SE1

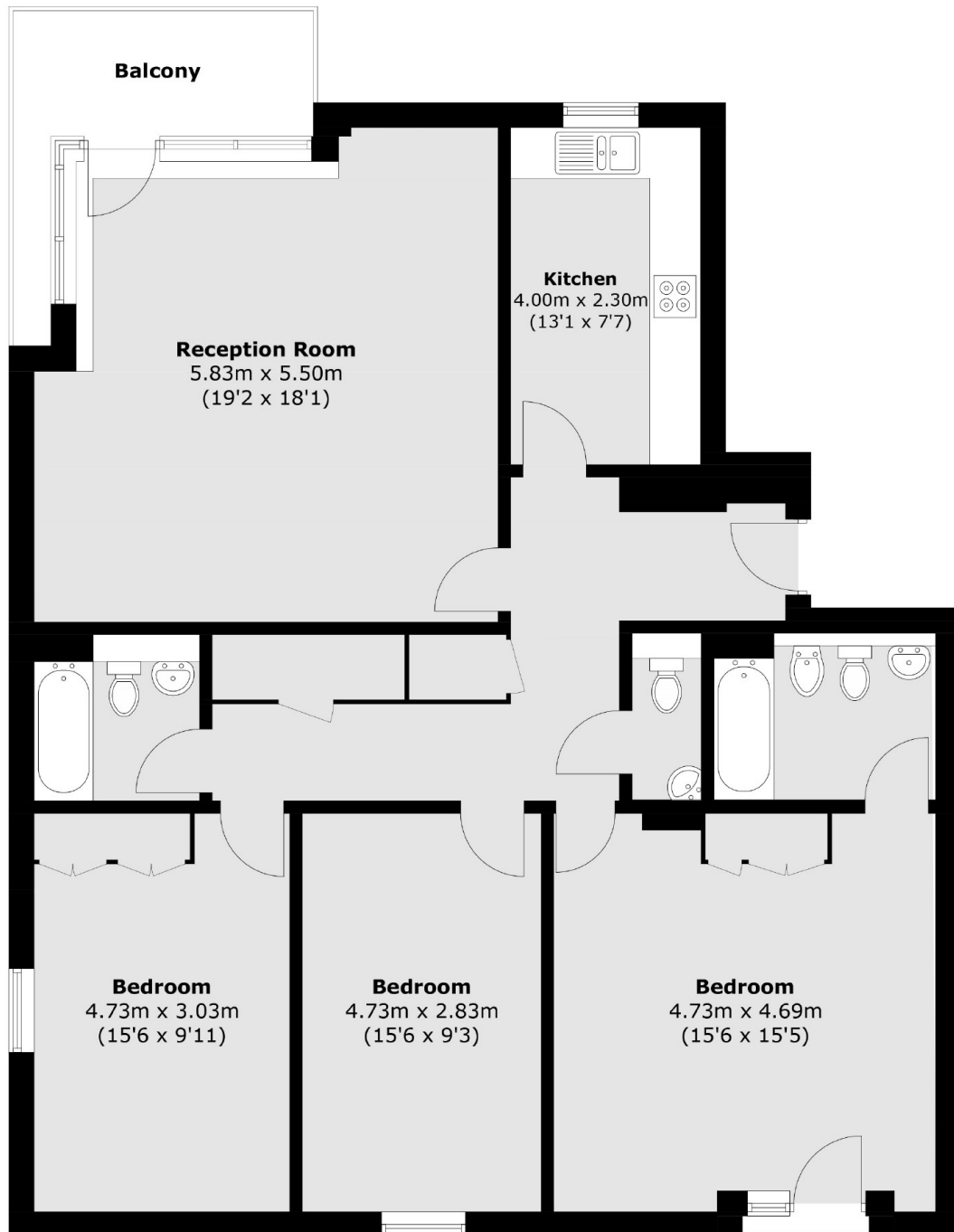
Arranged over just under 1,300sqft, the property offers ample light throughout and the views across the skyline are spectacular.

All three bedrooms are large double rooms and the master bedroom benefits from an en-suite bathroom. There is also an additional bathroom, guest WC and further storage in the hallway.

Vogans Mill Wharf boasts a 24 hour concierge, communal courtyard and a lovely fifth floor communal roof terrace, with skyline views. This property also benefits from secure, off-street parking.



Mill Street,
London, SE1



Total area (approx.): 119.6 sq. m (1287.4 sq. ft)
Balcony: 6.5 sq. m (70.0 sq. ft)

Dexters

London Bridge
54 Borough High Street
London
SE1 1XL
Sales
020 7650 5 100

Energy Rating: . We aim to make our particulars both accurate and reliable. However they are not guaranteed; nor do they form part of an offer or contract. If you require clarification on any points then please contact us, especially if you're traveling some distance to view. Please note that appliances and heating systems have not been tested and therefore no warranties can be given as to their good working order.

RICS | Regulated
Estate Agent
and Letting Agent

dexters.co.uk