



## Hilary Mews, SE1

£1,650,000

A very rarely available four storey, freehold town house, built in 2021, with a large eat in kitchen on the ground floor, a full width living room on the first floor, three generous double bedrooms, two bathrooms and an additional WC, plus a stunning private roof terrace.

Enviably located in the heart of SE1, moments from Borough and London Bridge Stations, Borough Market and the South Bank, with numerous amenities and attractions on your door step.

### Features

- Freehold Townhouse
- 24 Hour Concierge
- Secure Gated Entry
- High Spec Finish
- Private Roof Terrace
- Fantastic Skyline Views



## Hilary Mews, SE1

The main living space occupies the full width of the house with large floor to ceiling windows and a dual aspect. On the ground floor is a fully integrated kitchen with a breakfast bar, ample room for dining and a separate WC.

The master bedroom boasts a large en-suite bathroom and a luxurious walk-in wardrobe. The second and third bedrooms are also large doubles with built-in wardrobes and are served by a three piece family bathroom.

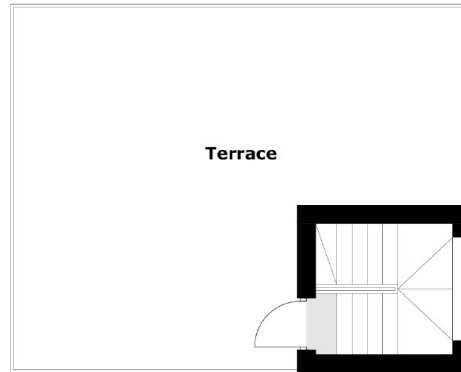
The house has been finished to a very high standard with high quality integrated appliances, under floor heating and attractive contemporary design. There is a fantastic sense of space from top to bottom, from the kitchen through to the roof terrace.

Brandon House is one of SE1's premier gated developments, with a very exclusive feel and a high quality finish. Benefits include a 24 hour concierge, cycle storage, secure entry and lift access.

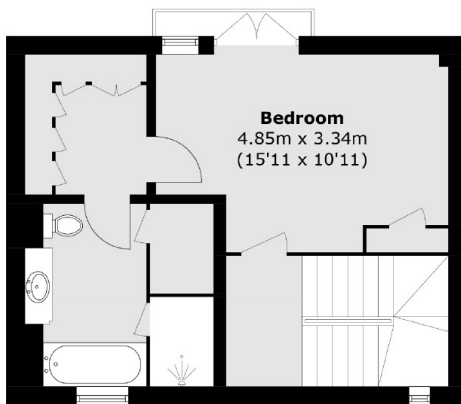




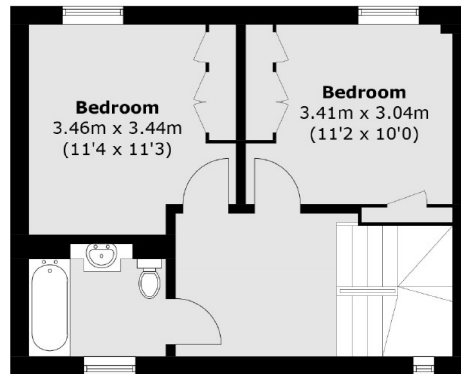
# Hilary Mews, London, SE1



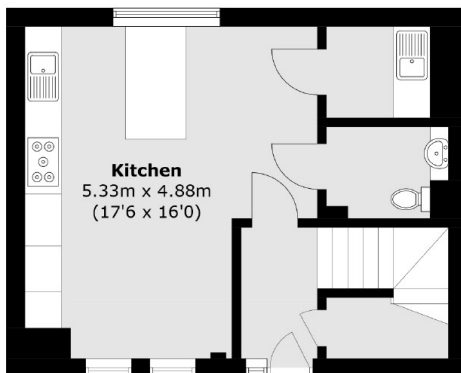
**Fourth Floor**



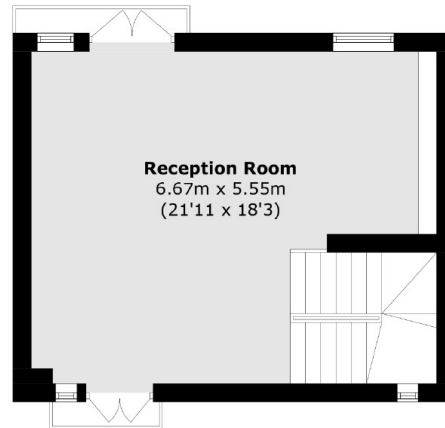
**Second Floor**



**Third Floor**



**Ground Floor**



**First Floor**

Total area (approx.): 155.1 sq. m (1,669.3 sq. ft)  
Terrace area (approx.): 36.8 sq. m (396.1 sq. ft)