



King & Queen Wharf, SE16

£410,000

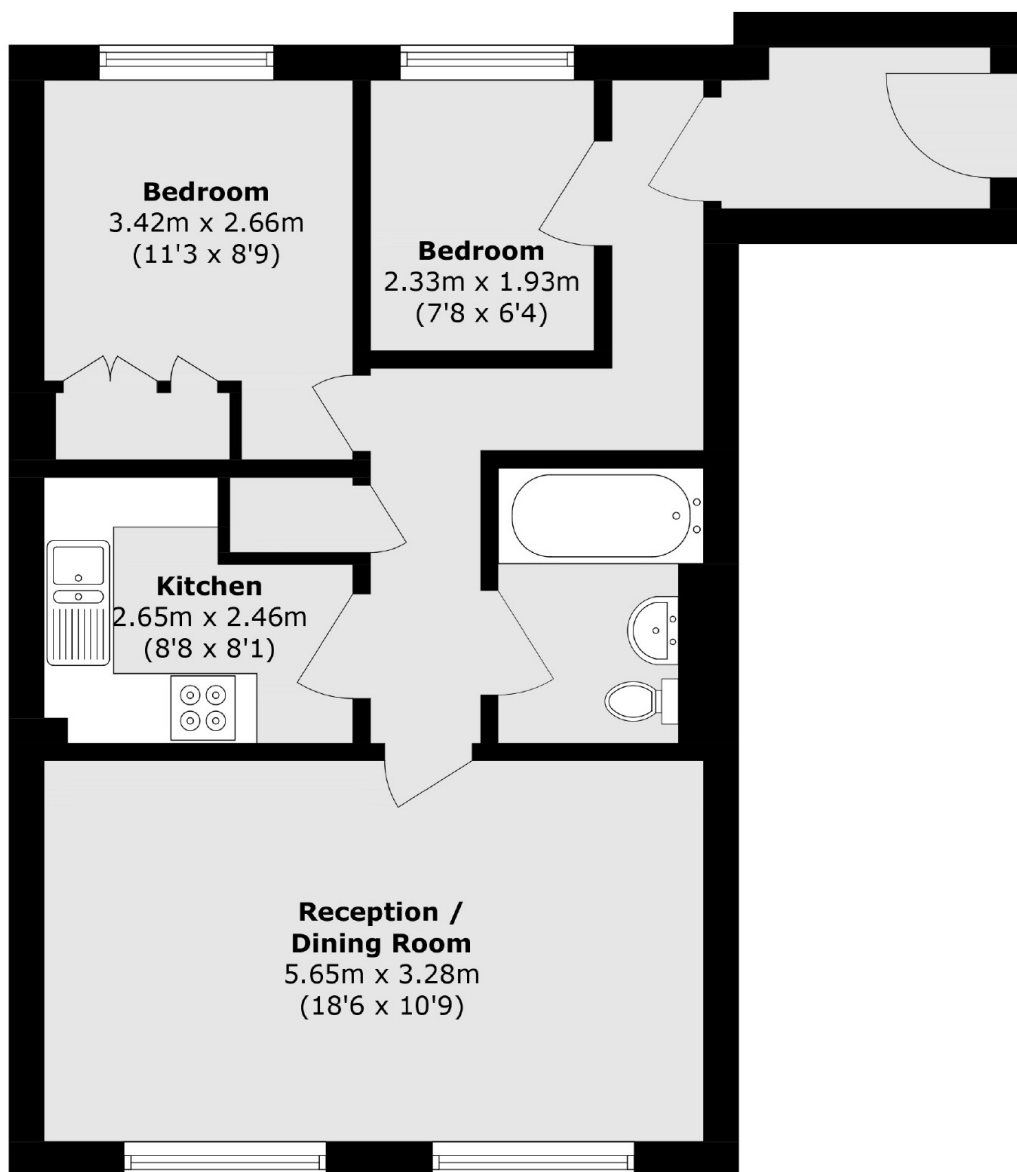
Situated in this sought after riverside development, this two bedroom flat is immaculately presented and boasts a large living space, separate kitchen, secure allocated parking, concierge and leisure facilities including a swimming pool, hot tub & sauna.

Located just 0.6 miles from Rotherhithe station and 0.8 miles from Canada Water. Westminster Court is surrounded by shops, cafés and riverside pubs and restaurants.

Features

- Two Bedrooms
- Chain Free
- Secure Allocated Parking
- Fantastic Condition
- Concierge Facilities
- Riverside Location

King & Queen Wharf, London, SE16



Total area (approx.): 56.0 sq. m (602.7 sq. ft)