



## Duchess Walk, SE1

£890,000

A very high spec two bedroom, two bathroom apartment at One Tower Bridge, with an open plan kitchen/ living room and two private balconies. There is a residents' health club with a gym, pool, sauna, steam room & 24 hour concierge

One Tower Bridge is located just off the South Bank adjacent to the iconic Tower Bridge and Shad Thames, within 0.4 miles of London Bridge Station, with access to Mainline Rail, the Jubilee, Bakerloo and Northern Lines.

### Features

- Two Bedrooms
- Two Bathrooms
- Chain Free
- Gym, Pool & Spa Facilities
- 24 hour Concierge
- Two Balconies



## Duchess Walk, SE1

This apartment is in the highly desirable Chatsworth House, benefitting from a sizeable open plan fully-fitted kitchen/ living room, flooded with light, leading out onto a private balcony with views up to Tower Bridge.

Both bedrooms are generous doubles, with a large family bathroom and additional en-suite. Both bedrooms benefit from full height built in wardrobes.

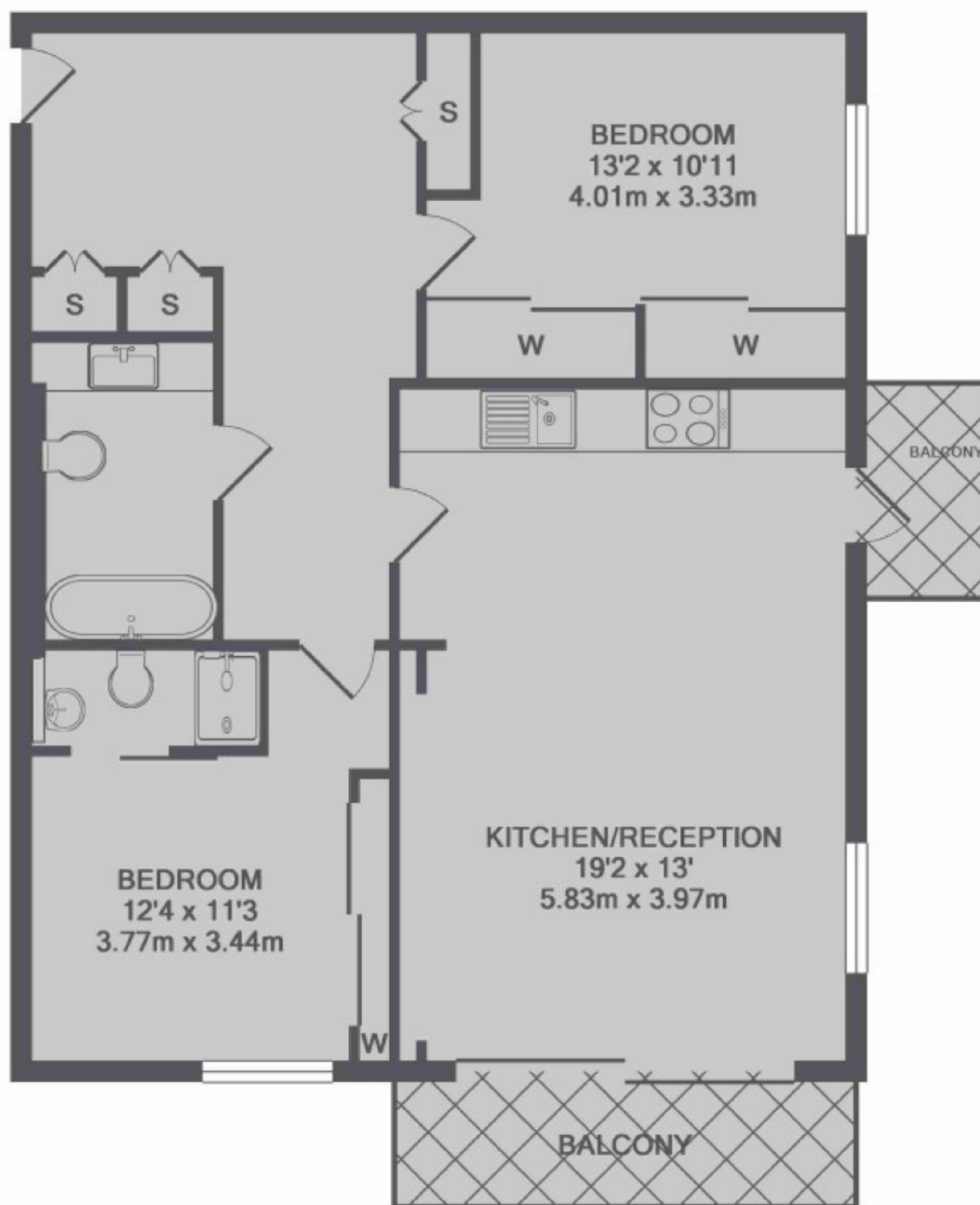
The apartment is finished to a very high specification with a fully automated heating, lighting, blind control and integrated music system.

This is a highly exclusive development with a 24 Hour Concierge, access to a residents Health Club and Swimming Pool, Sauna, Steam Room and Urban Golf experience suite.





# Duchess Walk, London, SE1



TOTAL APPROX. FLOOR AREA 803 SQ.FT. (74.6 SQ.M.)