



## Surrey Row, SE1

### £1,500,000

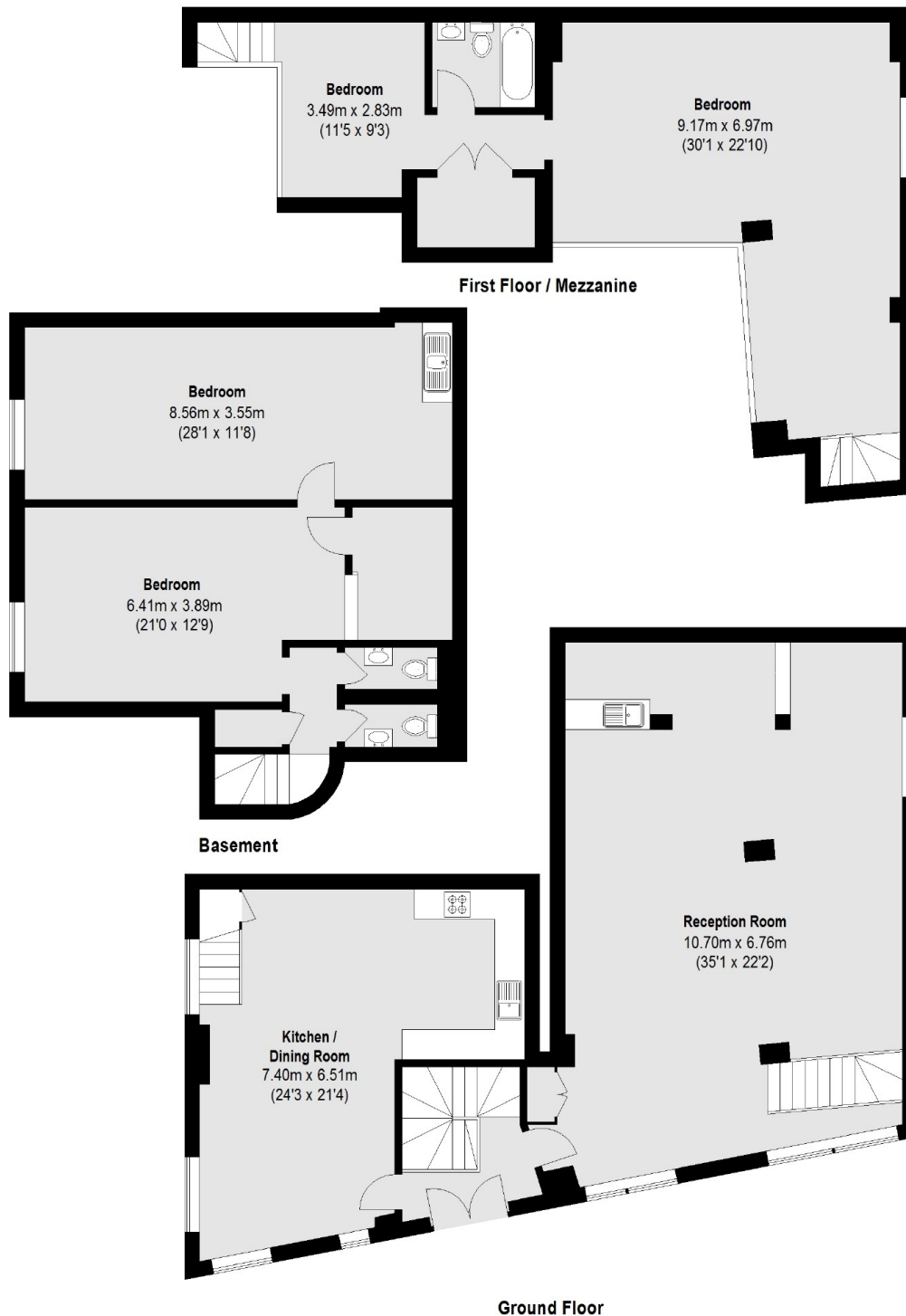
A substantial double fronted, split level apartment, spread over almost 3,000 sq ft, with its own front door, high ceilings, additional mezzanine accommodation and very large south-facing windows, plus allocated off-street parking. Offers in excess of £1,500,000.

Surrey Row runs between Blackfriars Road & Great Suffolk Street in central SE1, 0.2 miles from Southwark & 0.5 miles from Waterloo, with London Bridge, Borough Market, Flat Iron Square & the South Bank all in easy reach.

### Features

Offers in excess of £1,500,000.  
Former 1930s Printworks  
Almost 3,000 Sq Ft  
Own Front Door  
Large Windows & High Ceilings  
Residents' Gym & Sauna  
Chain Free Sale

# Surrey Row, London, SE1



Total area (approx.): 253.23 sq. m (2725 Sq. ft)

## Dexters

London Bridge  
54 Borough High Street  
London  
SE1 1XL  
Sales  
020 7650 5 100

Energy Rating: B. We aim to make our particulars both accurate and reliable. However they are not guaranteed; nor do they form part of an offer or contract. If you require clarification on any points then please contact us, especially if you're traveling some distance to view. Please note that appliances and heating systems have not been tested and therefore no warranties can be given as to their good working order.

 **RICS** | Regulated  
Estate Agent  
and Letting Agent

[dexters.co.uk](https://www.dexters.co.uk)