



Marine Street, SE16

£600,000

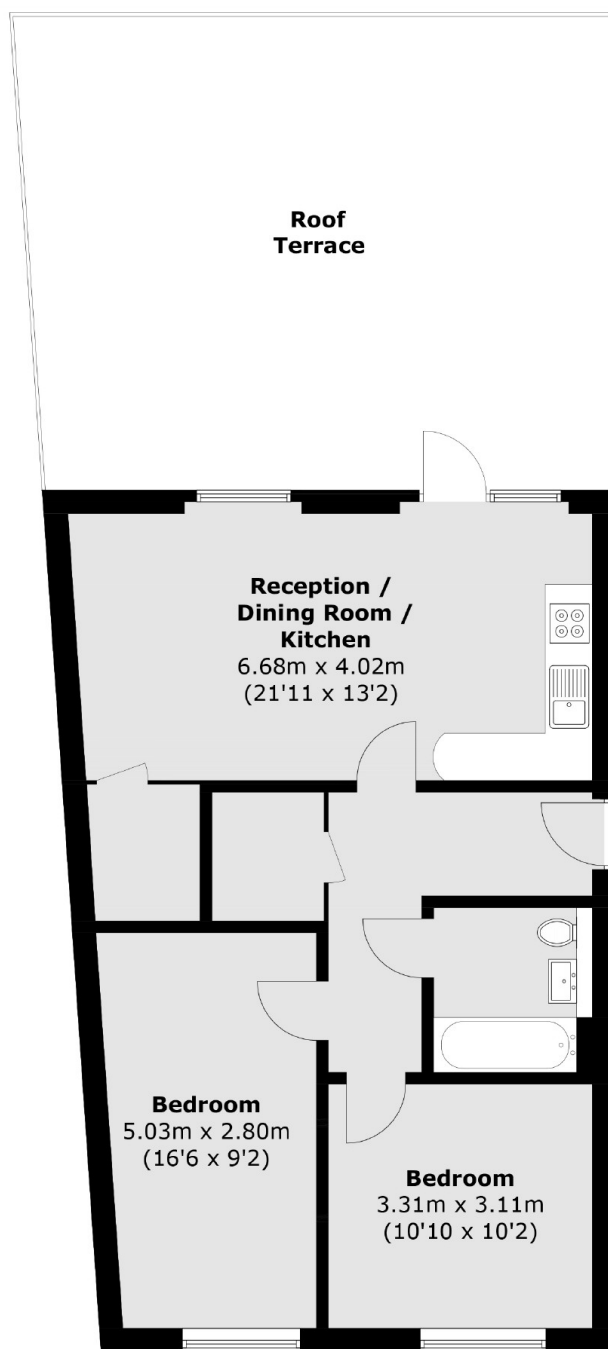
Located In the heart of Bermondsey, this two double bedroom flat, situated on the first floor, is in fantastic condition and has a large open plan kitchen living space, large private terrace, ample storage with the potential to turn into a second bathroom, air conditioning in both bedrooms, and lots of natural light.

Eyot House is only 0.2 miles from Bermondsey Station. Shad Thames, London Bridge, Maltby Street Market and a wide range of shops, cafés and restaurants are all close by.

Features

- Two Double Bedrooms
- Excellent Condition
- Private Terrace
- Communal Bike Storage
- Fantastic Location
- Long Lease

Marine Street, London, SE16



First Floor

Total area (approx.): 66.3 sq. m (713.6 sq. ft)
Roof Terrace: 44.7 sq. m (481.1 sq. ft)

Dexters

London Bridge
54 Borough High Street
London
SE1 1XL
Sales
020 7650 5 100

Energy Rating: C. We aim to make our particulars both accurate and reliable. However they are not guaranteed; nor do they form part of an offer or contract. If you require clarification on any points then please contact us, especially if you're traveling some distance to view. Please note that appliances and heating systems have not been tested and therefore no warranties can be given as to their good working order.

 **RICS** | Regulated
Estate Agent
and Letting Agent

[dexters.co.uk](https://www.dexters.co.uk)