



## Deverell Street, SE1

### £450,000

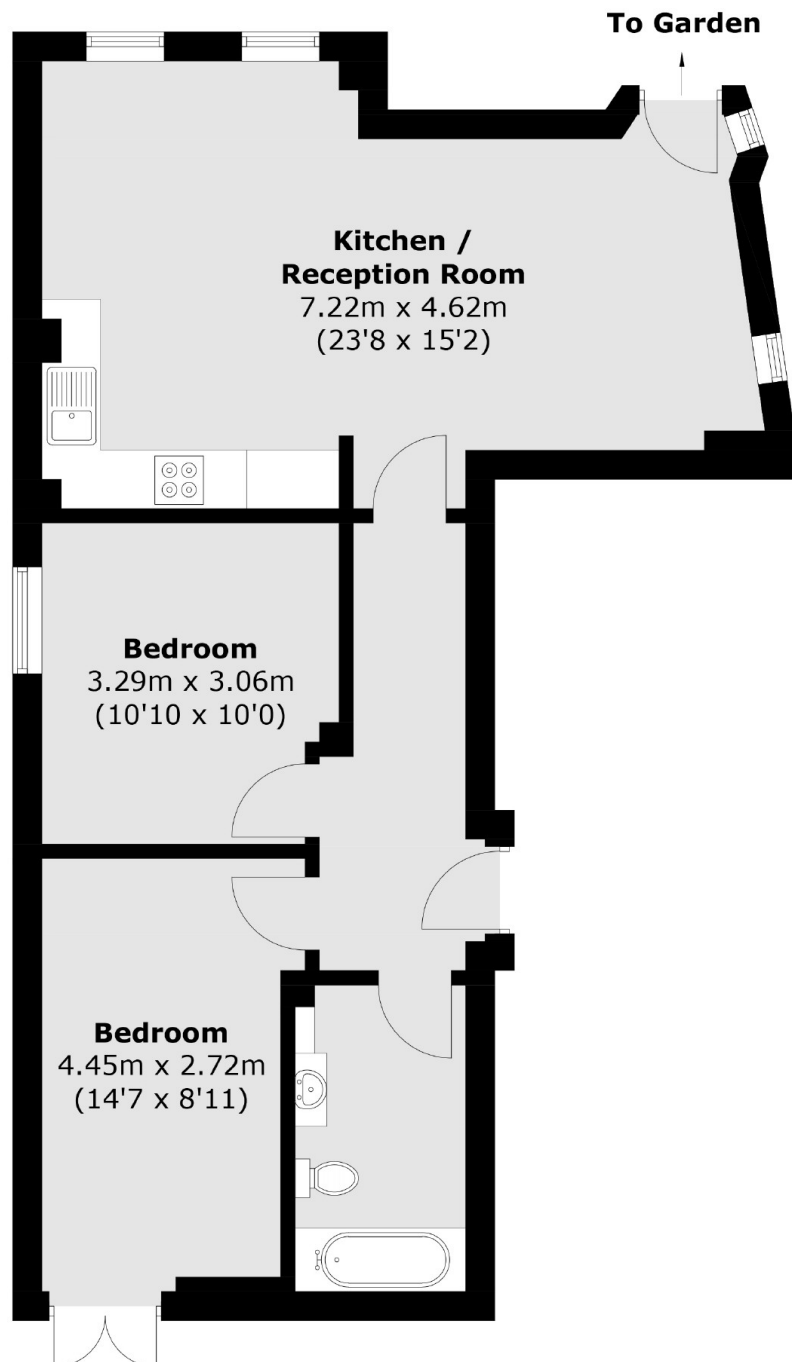
A highly attractive almost 700 sq ft ground floor flat with two generous double bedrooms, a large family bathroom, a spacious open plan living room and kitchen, plus access to two private terraces and a large separate storage space in the basement. Chain free sale. Offers in excess of £450,000.

The Aspect is enviably located on Spurgeon Street, tucked back off Great Dover Street, moments from Tabard Gardens and Trinity Church Square. London Bridge and Borough Stations are both nearby, along with Borough Market and the South Bank.

### Features

- Offers in excess of £450,000
- Large Separate Storage Space
- Two Double Bedrooms
- Two Terraces
- Open Plan Living Space
- Chain Free Sale

# Deverell Street, London, SE1



Total area (approx.): 64.3 sq. m (692.1 sq. ft)

## Dexters

London Bridge  
54 Borough High Street  
London  
SE1 1XL  
Sales  
020 7650 5 100

Energy Rating: . We aim to make our particulars both accurate and reliable. However they are not guaranteed; nor do they form part of an offer or contract. If you require clarification on any points then please contact us, especially if you're traveling some distance to view. Please note that appliances and heating systems have not been tested and therefore no warranties can be given as to their good working order.

 **RICS** | Regulated  
Estate Agent  
and Letting Agent

[dexters.co.uk](https://www.dexters.co.uk)