



## Coopers Road, SE1

### £625,000

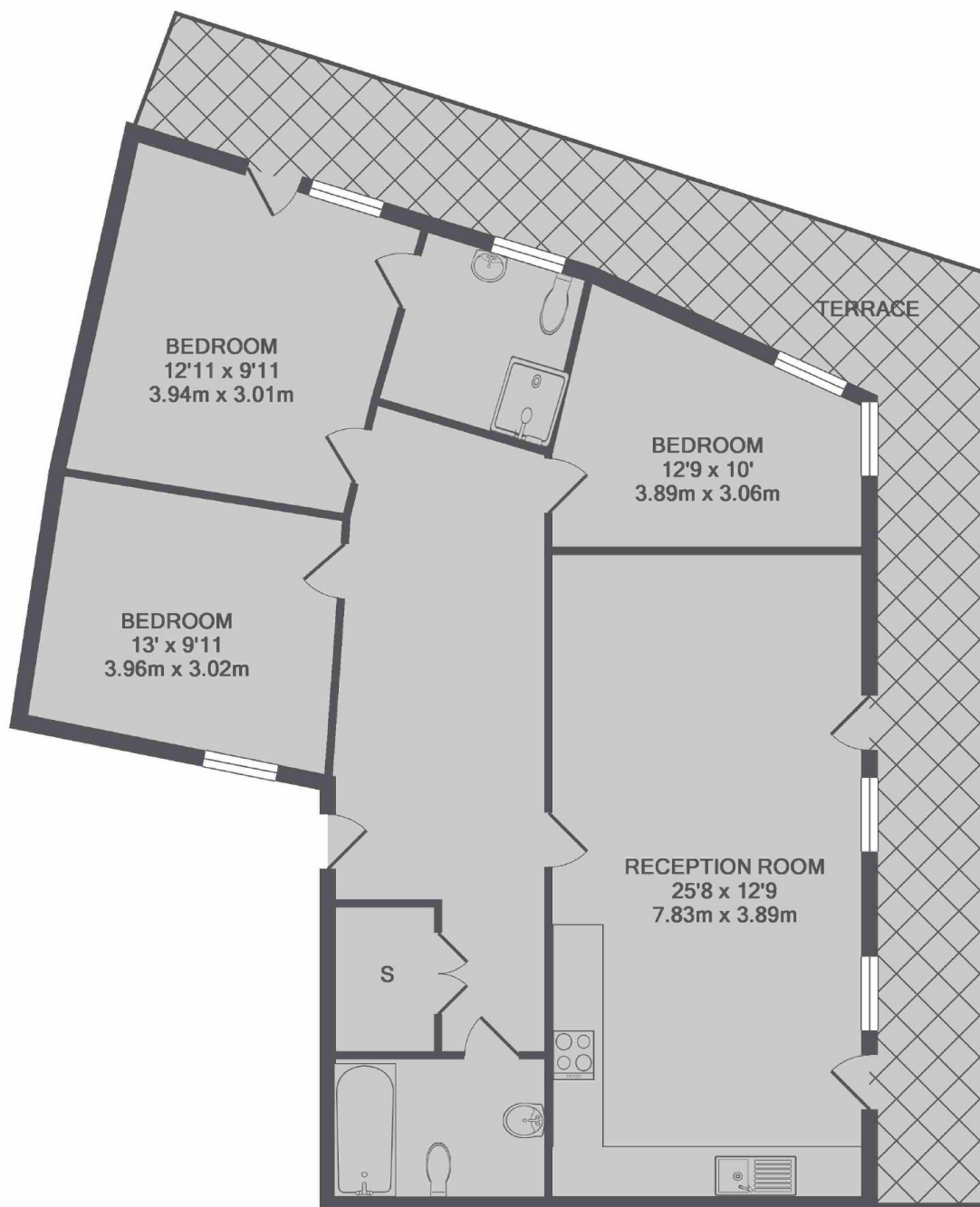
An incredibly spacious circa 1,000 sq ft, Penthouse Apartment, with incredible views and a very large private roof terrace. There is a large open plan reception room, ample storage, three double bedrooms and two bathrooms. This is a chain free sale.

Coopers Road is enviably located, with numerous amenities nearby. Burgess Park is a few moments away with transport links via Elephant & Castle, Bermondsey & South Bermondsey Stations and major bus routes across the City.

### Features

- Incredible Views
- Penthouse Apartment
- Three Bedrooms
- Two Bathrooms
- Large Private Terrace
- Lift Access & Secure Entry
- Chain Free Sale

# Coopers Road, London, SE1



TOTAL APPROX. FLOOR AREA 999 SQ.FT. (92.8 SQ.M.)  
Made with Metropix ©2017

## Dexters

London Bridge  
54 Borough High Street  
London  
SE1 1XL  
Sales  
020 7650 5 100

Energy Rating: . We aim to make our particulars both accurate and reliable. However they are not guaranteed; nor do they form part of an offer or contract. If you require clarification on any points then please contact us, especially if you're traveling some distance to view. Please note that appliances and heating systems have not been tested and therefore no warranties can be given as to their good working order.

 **RICS** | Regulated  
Estate Agent  
and Letting Agent

[dexters.co.uk](https://www.dexters.co.uk)