



Swan Mead, SE1

£350,000

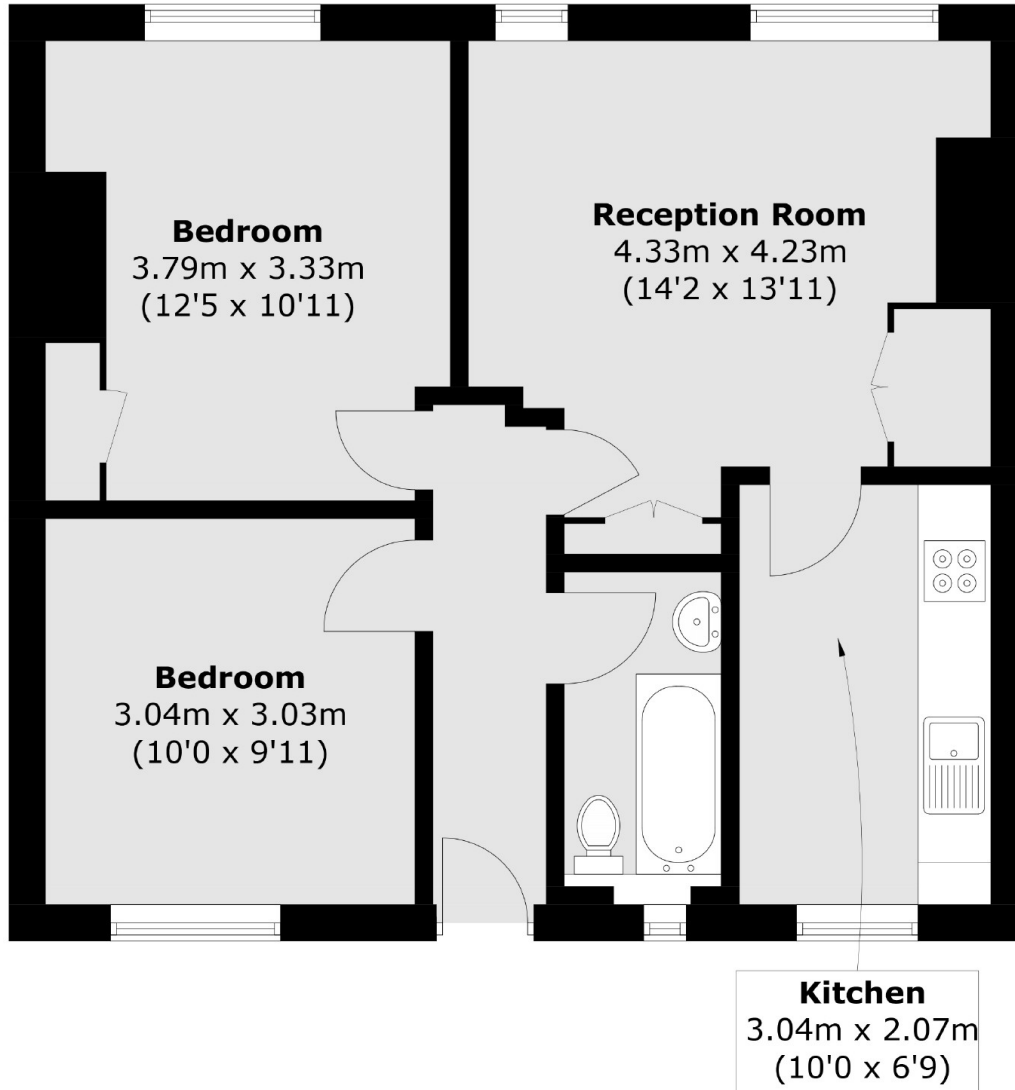
A two double bedroom ground floor flat with its own front door, two generous double bedrooms, a separate kitchen and living room, a three piece bathroom & a small front garden. There is also an attractive communal garden.

Swan Mead is tucked back off Tower Bridge Road, just down from Bermondsey Street and Shad Thames, leading up to London Bridge, the South Bank and Borough Market.

Features

- Two Double bedrooms
- Ground Floor Flat
- Double Glazed
- Front Garden (Demise TBC)
- Communal Garden
- Chain Free

Swan Mead,
London, SE1



Total area (approx.): 55.5 sq. m (597.4 sq. ft)