



Silwood Street, SE16

£375,000

Situated in a quiet development, this two double bedroom flat boasts a large living space, modern kitchen and bathroom, ample storage and a private balcony.

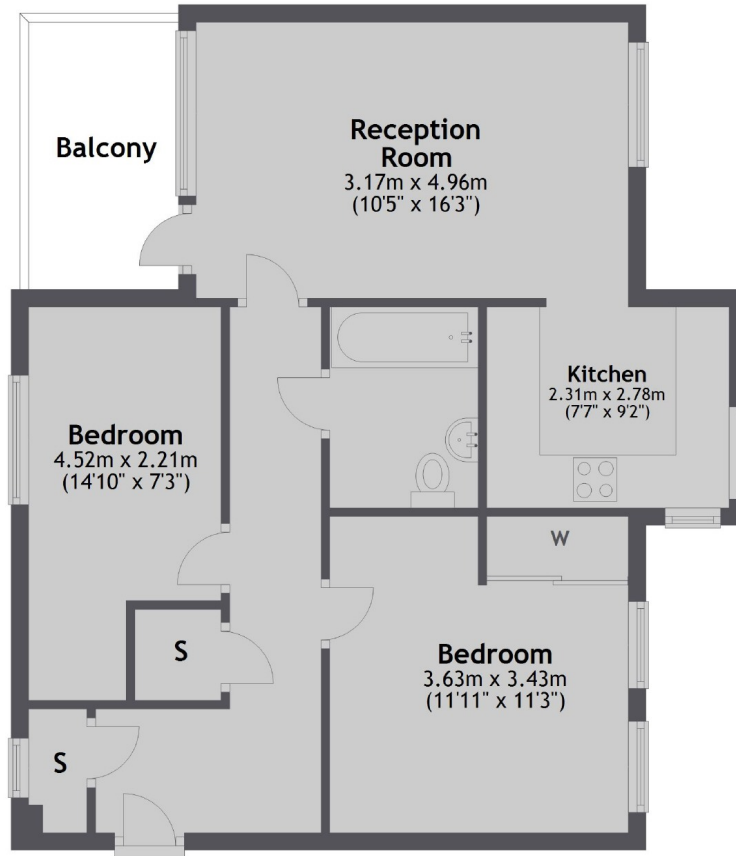
Silwood Street is located only 0.4 miles from Surrey Quays station and 0.7 miles from Canada Water station offering excellent transport links to all of London. An abundance of shops, cafés and restaurants are also close by.

Features

- Two Double Bedrooms
- Private Balcony
- Quiet Development
- Second Floor
- Furnished
- Bermondsey

Silwood Street,
London, SE16

Second Floor



Total area: approx. 60.4 sq. metres (650.5 sq. feet)