



## Long Lane, SE1 £700,000

A very attractive fifth floor flat with a open plan living room and fully fitted modern kitchen, two high spec bathrooms, two generous double bedrooms and a private balcony. Chain Free Sale. Offers in excess of £700,000.

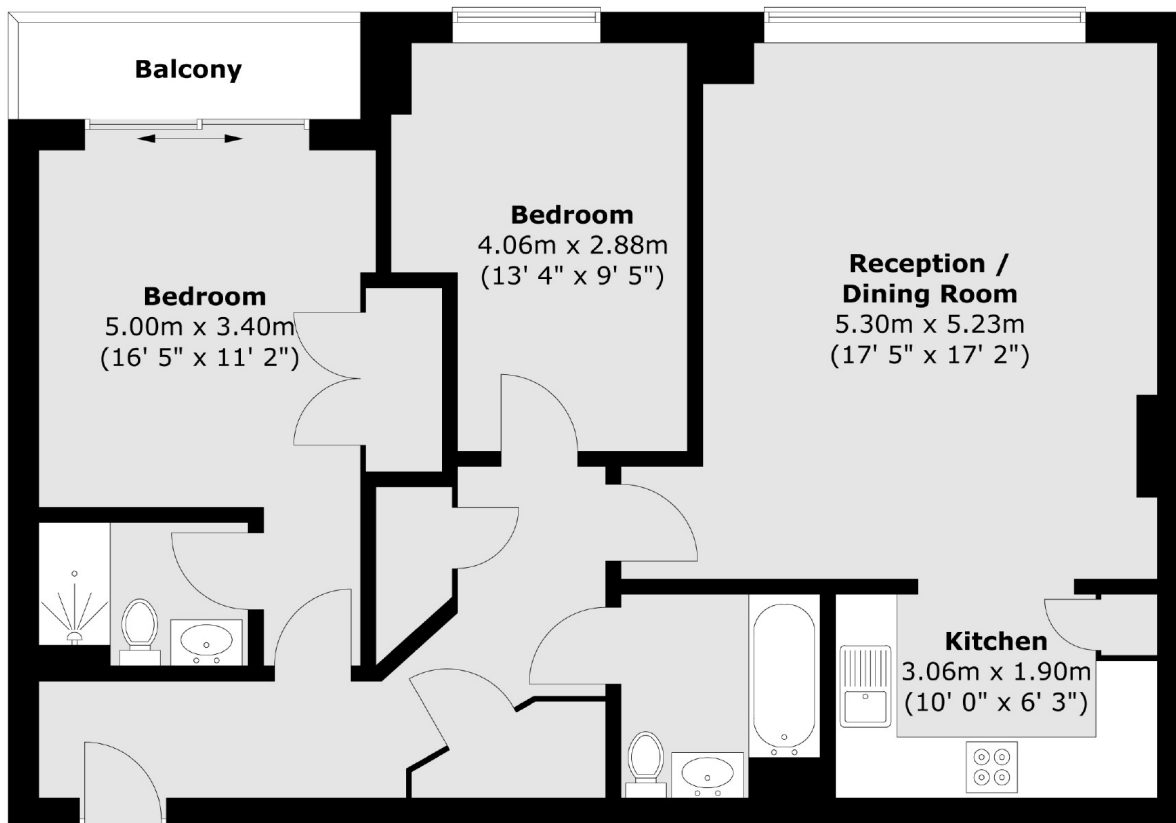
Godfree Court is an attractive modern development enviably located at the top of Long Lane, next to Borough High Street & Borough tube, with London Bridge Station, Borough Market and Bankside just beyond.

### Features

- Offers in excess of £700,000
- Two Double Bedrooms
- Two Bathrooms
- Private Balcony
- Secure Entry & Lift Access
- Very Central Location
- Valid EWS1 Form
- Chain Free Sale

# Long Lane, London, SE1

## Fourth Floor



Total area (approx.) : 78 sq. m (839 sq. ft)  
Total balcony area (approx.) : 3.2 sq. m (34 sq. ft)