



Isaac Way, SE1

£669 Per week

A highly attractive second floor flat, set to the back of the building, with a large open plan living room & modern kitchen, two generous double bedrooms, each with built-in wardrobes & two bathrooms, plus a private balcony & secure underground parking.

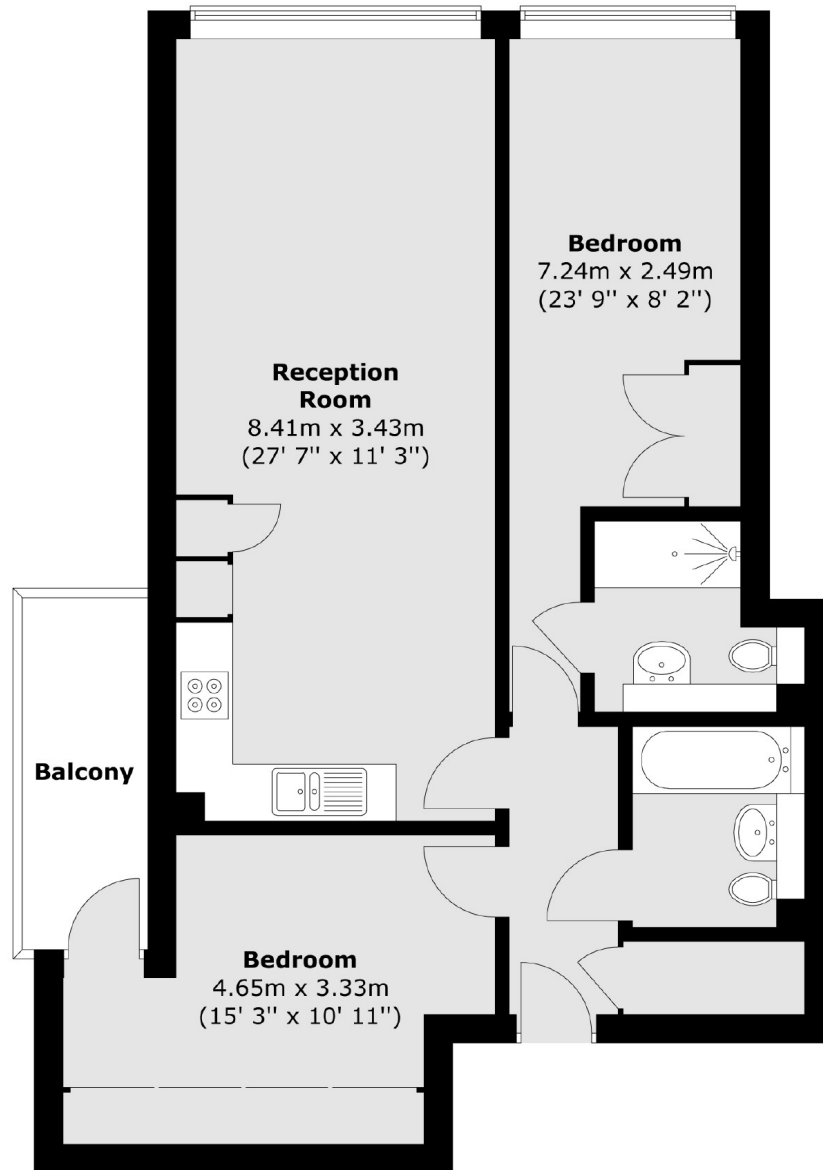
Isaac Way is ideally located, just behind Borough Station, tucked back off Marshalsea Road, at the foot of Borough High Street. London Bridge, Borough Market and the South Bank are all close by.

Features

- Two Double Bedrooms
- Two Bathrooms
- Private Balcony
- Lift Access & Secure Entry
- Excellent Transport Links
- Secure Underground Parking

Isaac Way, London, SE1

Second Floor



Total area (approx.) : 72.8 sq. m (784 sq. ft)
Total balcony area (approx.) : 5.1 sq. m (55 sq. ft)