



## Hopton Street, SE1

£625,000

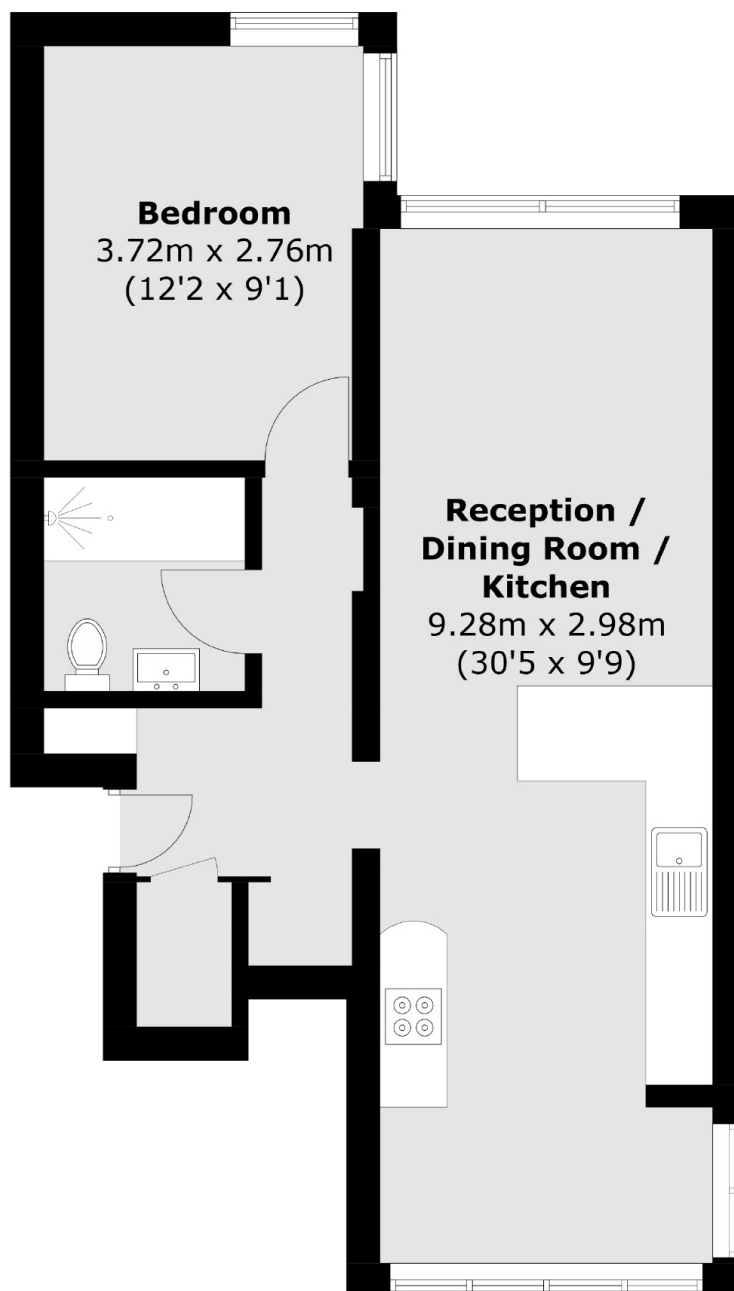
Situated in a sought after riverside development with a generous open plan kitchen & living room, bathroom, a spacious double bedroom, and ample storage. The property boasts direct river views, lift access & secure entry. Chain Free Sale.

Falcon Point is incredibly well located on the riverside, next to the Tate Modern and Southwark Station, with numerous restaurants, cafés and other attractions on your door step. St Paul's, Blackfriars and the City are just across the river.

### Features

- Open Plan Kitchen & Living Space
- Fantastic Location
- Lift Access & Secure Entry
- Direct River Views
- Chain Free Sale

# Hopton Street, London, SE1



Total area (approx.): 51.2 sq. m (551.1 sq. ft)

## Dexters

London Bridge  
54 Borough High Street  
London  
SE1 1XL  
Sales  
020 7650 5 100

Energy Rating: C. We aim to make our particulars both accurate and reliable. However they are not guaranteed; nor do they form part of an offer or contract. If you require clarification on any points then please contact us, especially if you're traveling some distance to view. Please note that appliances and heating systems have not been tested and therefore no warranties can be given as to their good working order.

 **RICS** | Regulated  
Estate Agent  
and Letting Agent

dexters.co.uk