



## Green Walk, SE1

£1,175,000

A 1,744 sq ft Warehouse Conversion, with exposed brick, large sash windows, a spacious open plan kitchen & living room, three double bedrooms & three bathrooms, sold with a Share of Freehold and chain free. Offers in excess of £1,175,000

The Jam Factory is one of SE1's most desirable developments, set on Rothsay Street, moments from Bermondsey Street, with London Bridge, Borough Market & the Southbank just beyond.

### Features

Offers in excess of £1,175,000  
1,744 Sq Ft  
Sash Windows  
Three Double Bedrooms  
Three Bathrooms  
24 Hour Concierge  
Valid EWS1 Form  
Chain Free Sale



## Green Walk, SE1

This apartment is a fantastic size with a very large living space, allowing ample room for dining, a separate seating area, a large full length kitchen and and is flooded with light due to its many sash windows.

All three bedrooms are generous doubles, each with large built-in wardrobes. The master bedroom benefits from an en-suite shower room, whilst the second and third bedrooms are served by a three piece family bathroom.

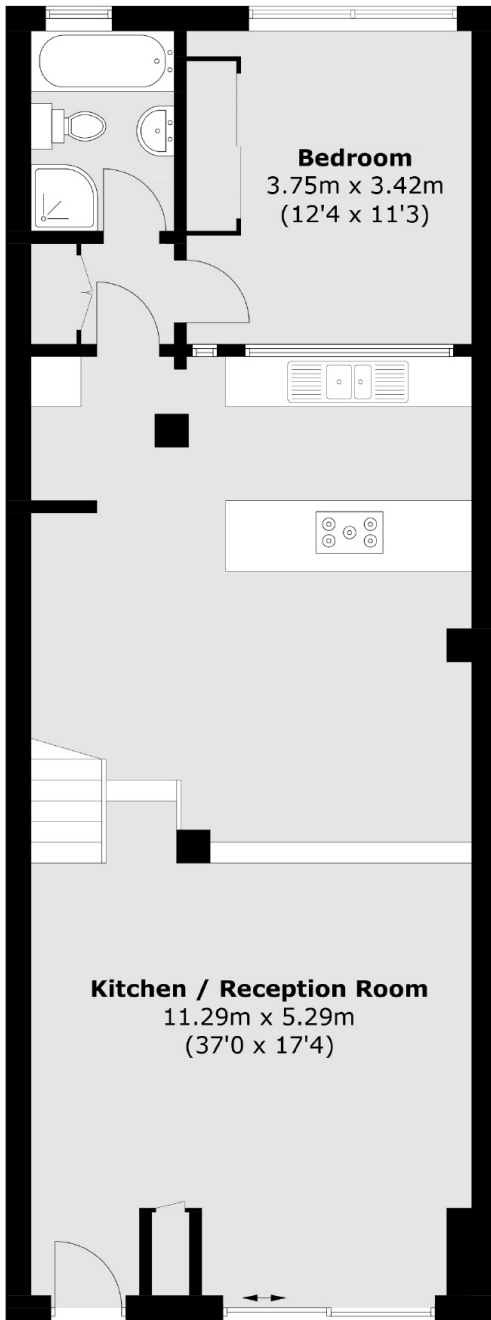
The former Hartley's Jam factory is iconic, award-winning development, with an attractive blend of period charm and contemporary design, accentuating the best original features, yet benefiting from modern fittings throughout.

Benefitting from an on-site concierge, landscaped communal gardens, walkways and a children's' play area, there is a genuine community feel here.

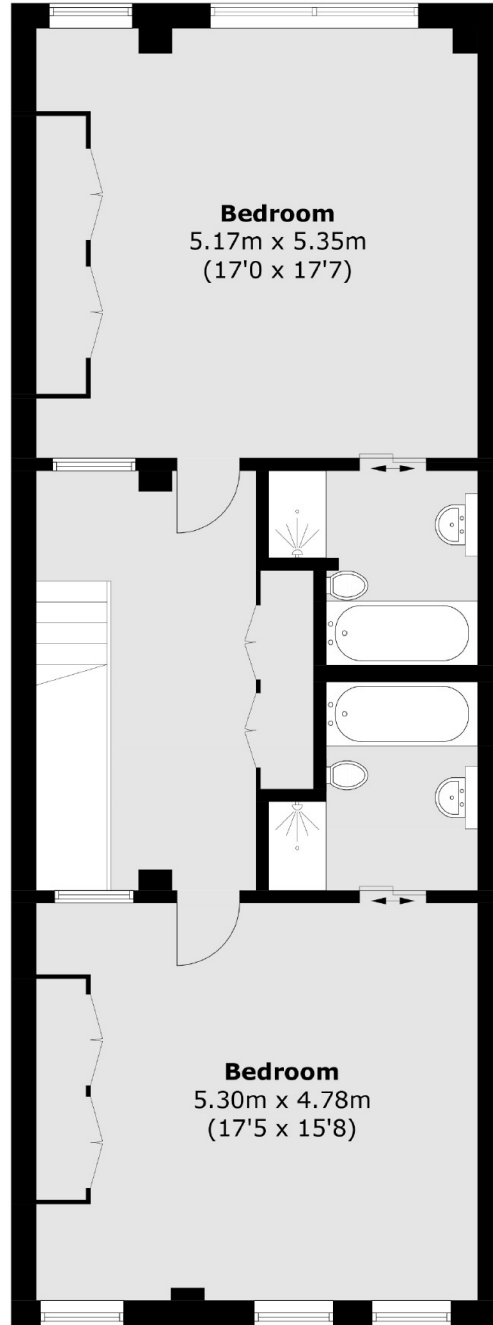




Green Walk,  
London, SE1



**Ground Floor**



**First Floor**

Total area (approx.): 162.1 sq. m (1,744.8 sq. ft)