



Tower Bridge Road, SE1

£625,000

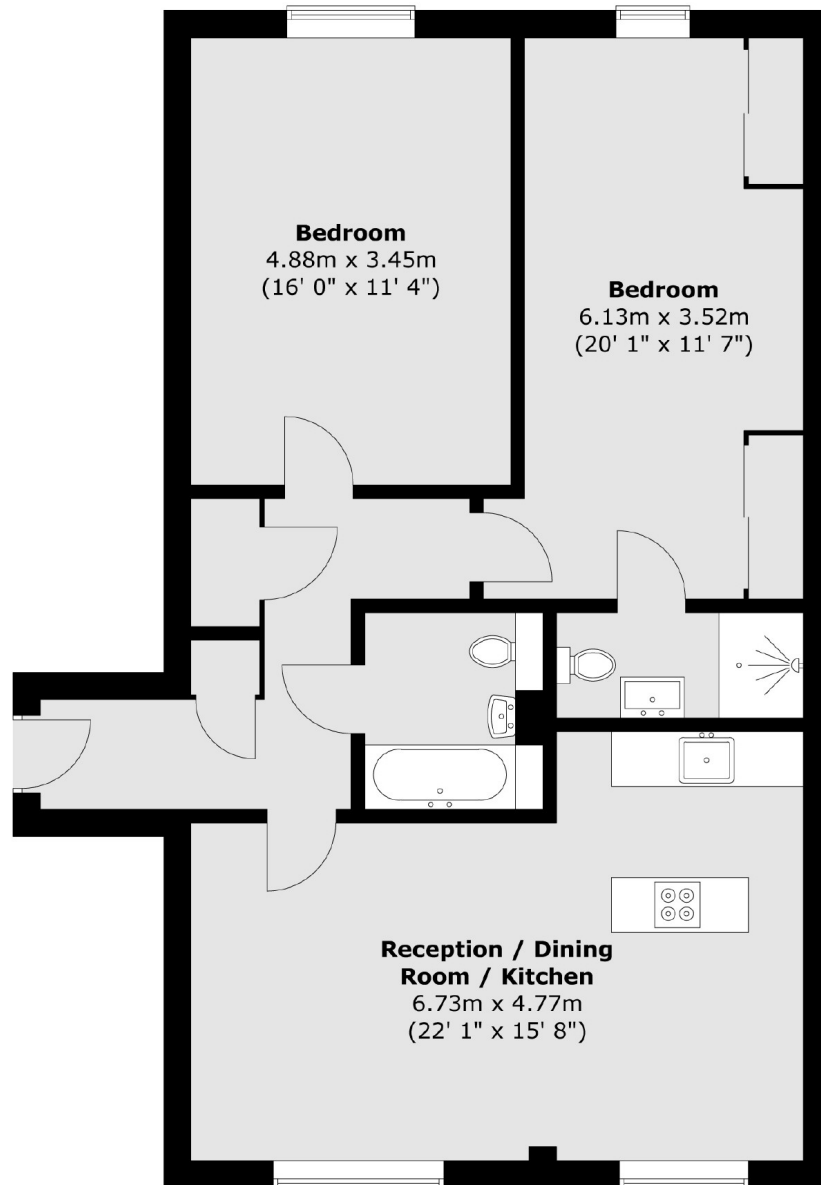
Situated in prime SE1, this two double bedroom flat is immaculately presented throughout and boasts a large open plan kitchen and living area, two bathrooms, two balconies and ample storage.

Tower Bridge Road is moments from Maltby Street Market, Bermondsey Street and is surrounded by shops, cafés and restaurants. London Bridge station is only 0.5 miles away.

Features

- Two Double Bedrooms
- Two Bathrooms
- Fantastic Condition
- Chain Free
- Lift Access
- Great Location

Tower Bridge Road, London, SE1



Total area (approx.) : 84.6 sq. m (911 sq. ft)