



Freda Street, SE16

£400,000

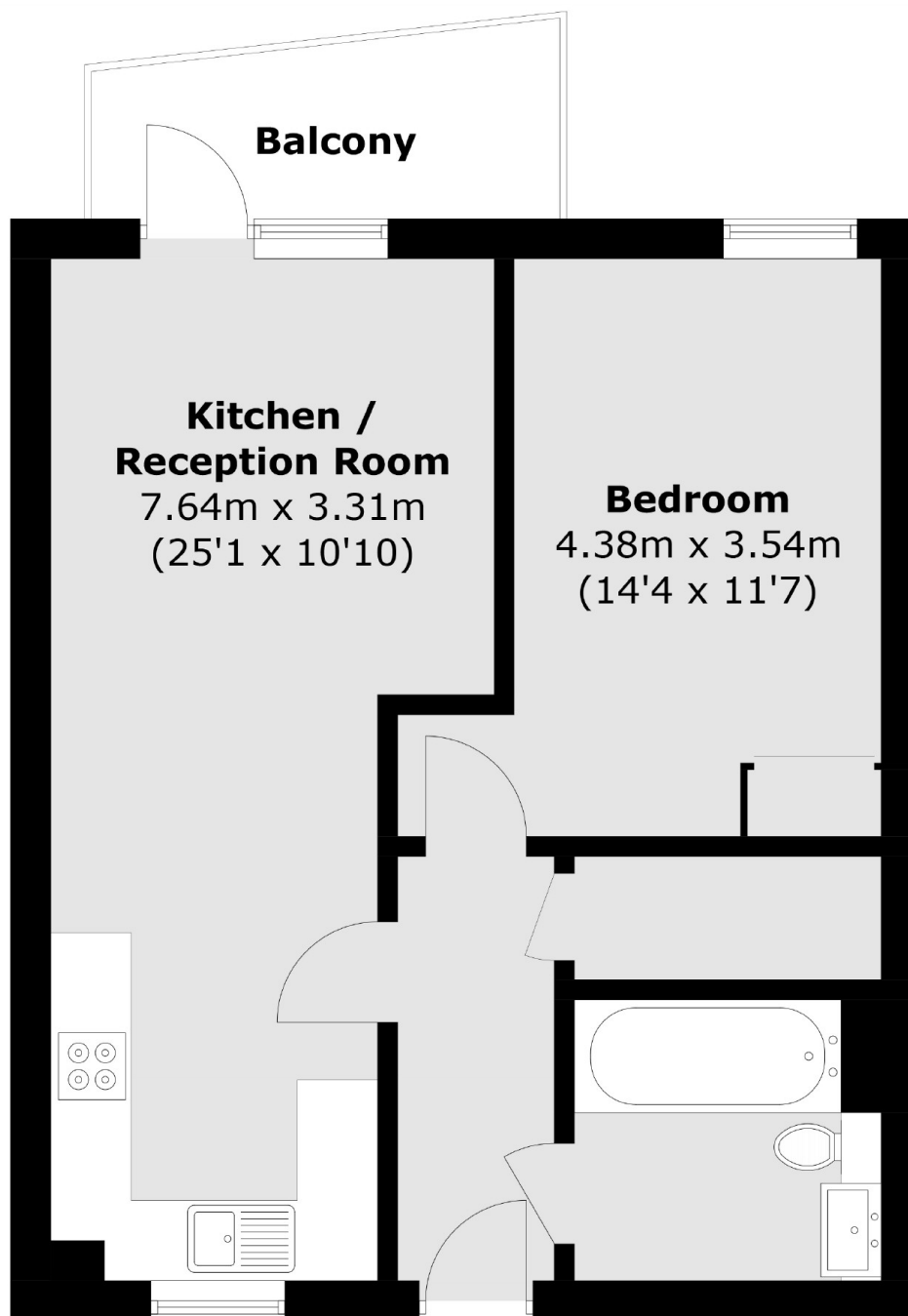
Offering fantastic views of The City and Tower Bridge, this one double bedroom flat is in excellent condition and has a spacious open plan kitchen living area, modern bathroom, ample storage and large private balcony.

The Parker Building is enviably located, on Freda Street, tucked off Jamaica Road, 0.2 miles from Bermondsey Underground. Shad Thames, the Riverside and London Bridge all also within easy reach.

Features

- One Double Bedroom
- Private Balcony
- Fantastic Condition
- Excellent Location
- Modern Development
- Long Lease

Freda Street, London, SE16



Total area (approx.): 47.6 sq. m (512.4 sq. ft)