



Maidstone Buildings Mews, SE1

£750 Per week

A rare opportunity to rent a two bedroom Victorian warehouse conversion in the exceptionally attractive Maidstone Building Mews.

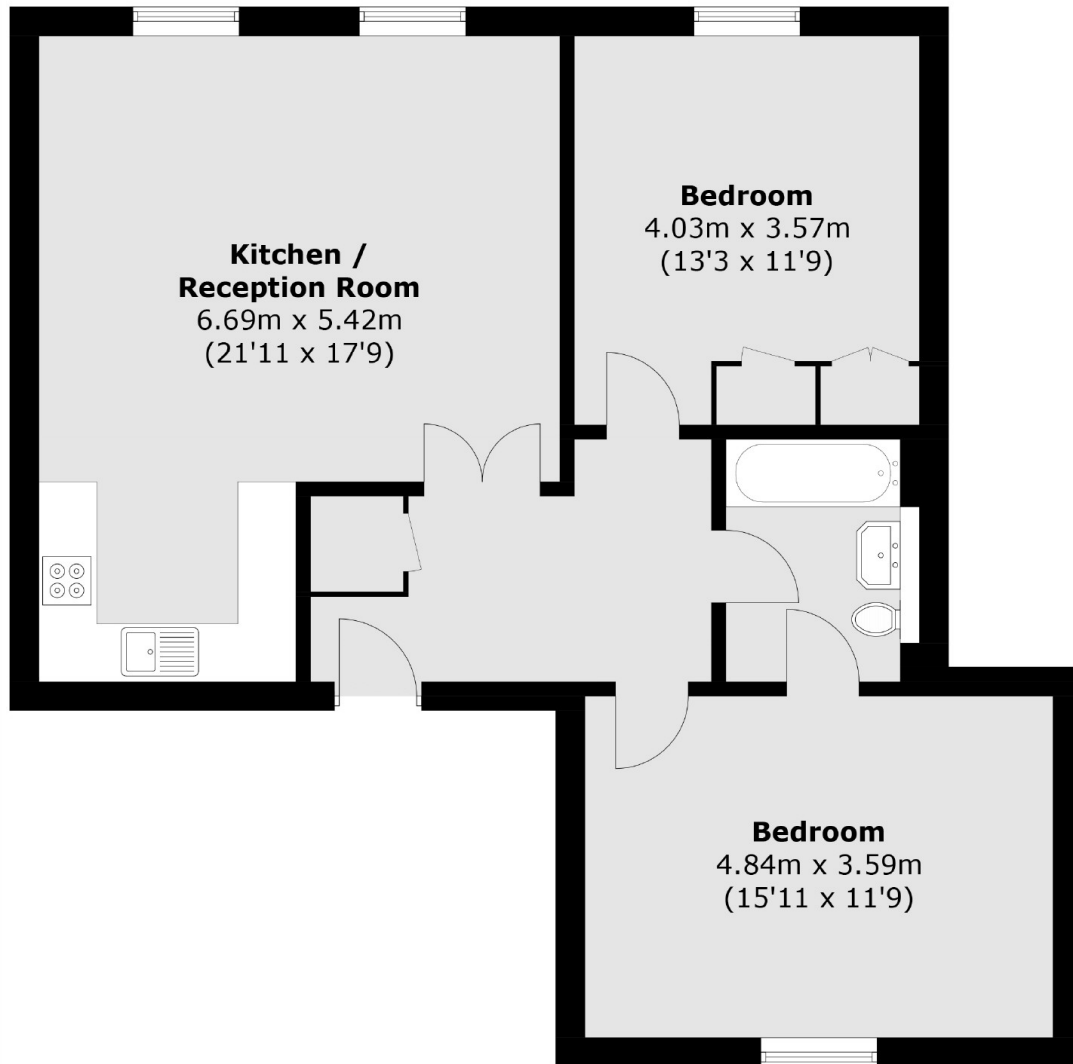
Situated immediately off of Borough High Street, London Bridge Station, Borough Market, Bermondsey Street and the City are all within walking distance.

Features

Two Bedrooms
Open Plan
Victorian Warehouse
Conversion

On-Site Porter

Maidstone Buildings Mews, London, SE1



Total area (approx.): 78.7 sq. m (847.1 sq. ft)