



Webber Street, SE1

£550,000

An highly desirable apartment with a spacious open plan kitchen and living room, two double bedrooms, ample storage, two modern bathrooms and secure off-street parking for a large car, 24 hour concierge and communal courtyard.

Webber Street is found in the heart of SE1, between Borough, Southwark and London Bridge stations, with easy access to the Southbank, Borough Market, various other attractions including the Tate Modern, Globe Theatre, and many schools.

Features

- Off-Street parking
- Two Double Bedrooms
- Two Bathrooms
- Immaculately Presented
- Secure Bicycle Parking
- EWS1 A1 Compliant



Webber Street, SE1

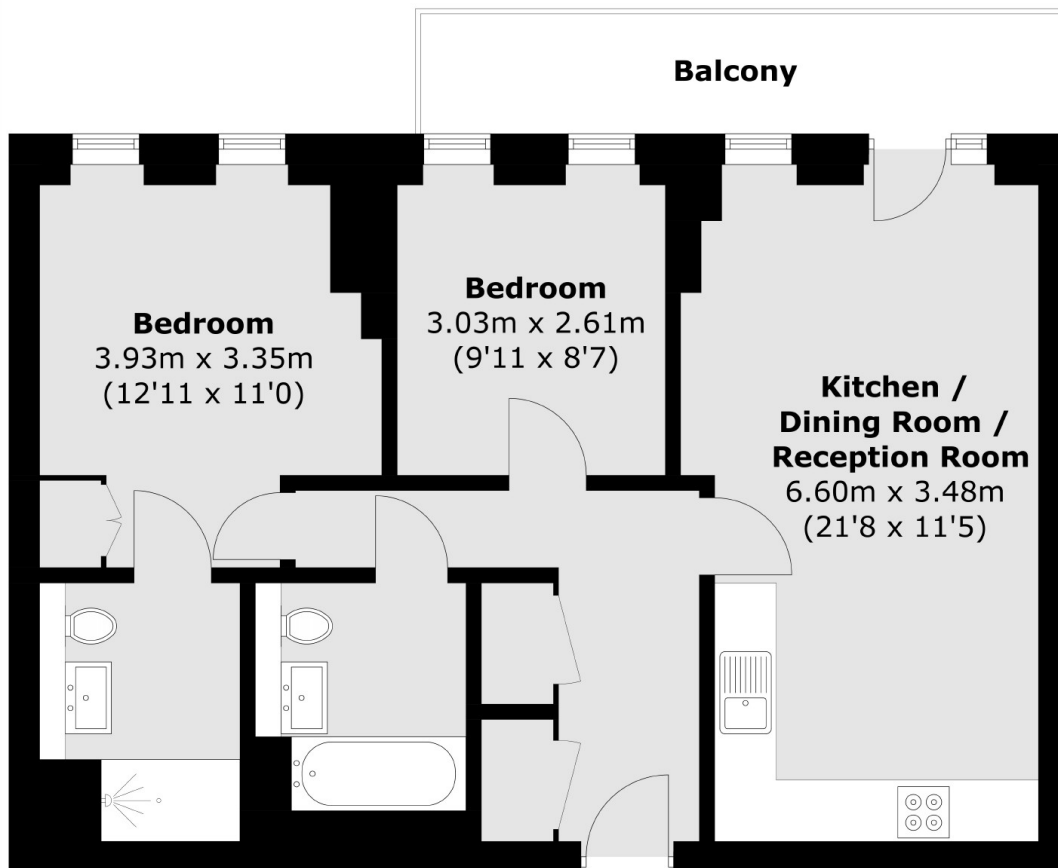
The apartment benefits from excellent natural light thanks to full height windows in every room. The main living space opens out onto the balcony, overlooking Webber Street.

Both bedrooms are good doubles with ample space and built-in storage, whilst the master bedroom benefits from an en-suite shower room. The main living space is a great size, with a fully fitted kitchen and ample room for dining and a separate seating area.

MyBase is a very well kept and secure development with a 24 hour concierge service, residents' bike storage and a large communal courtyard. The building has recently undergone extensive works to the cladding and has a EWS1 A1 rating.



Webber Street, London, SE1



Total area (approx.): 63.7 sq. m (685.7 sq. ft)

Balcony: 7.3 sq. m (78.6 sq. ft)