



Leydon Close, SE16

£800,000

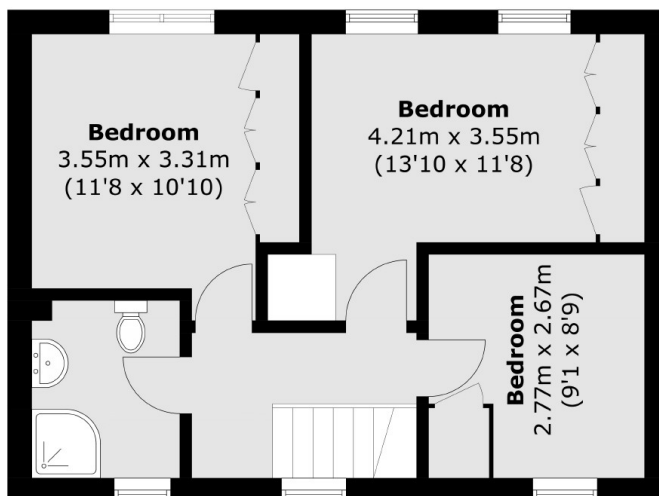
Situated on a quiet street, this three bedroom house is immaculately presented and boasts a large living space, additional dining room, separate kitchen, guest WC, parking, a garage and private garden.

Located just 0.5 miles from Canada Water station and 0.5 miles from Rotherhithe Station, Leydon Close offers an easy commute to anywhere in London. An abundance of shops, cafés and restaurants are also close by.

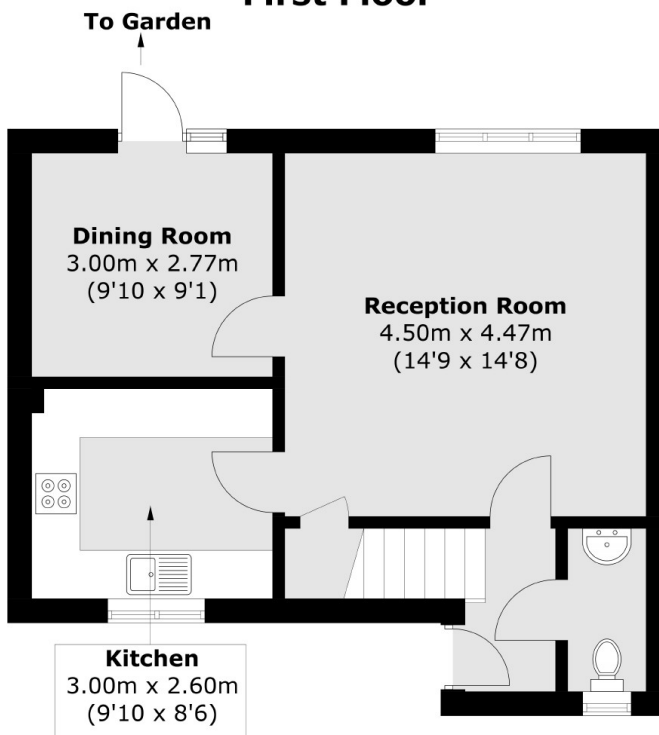
Features

- Three Bedrooms
- Excellent Location
- Freehold House
- Private Garden
- Chain Free
- Parking & Private Garage

Leydon Close, London, SE16



First Floor



Ground Floor

Total area (approx.): 86.5 sq. m (931.0 sq. ft)