



Clink Street, SE1

£875,000

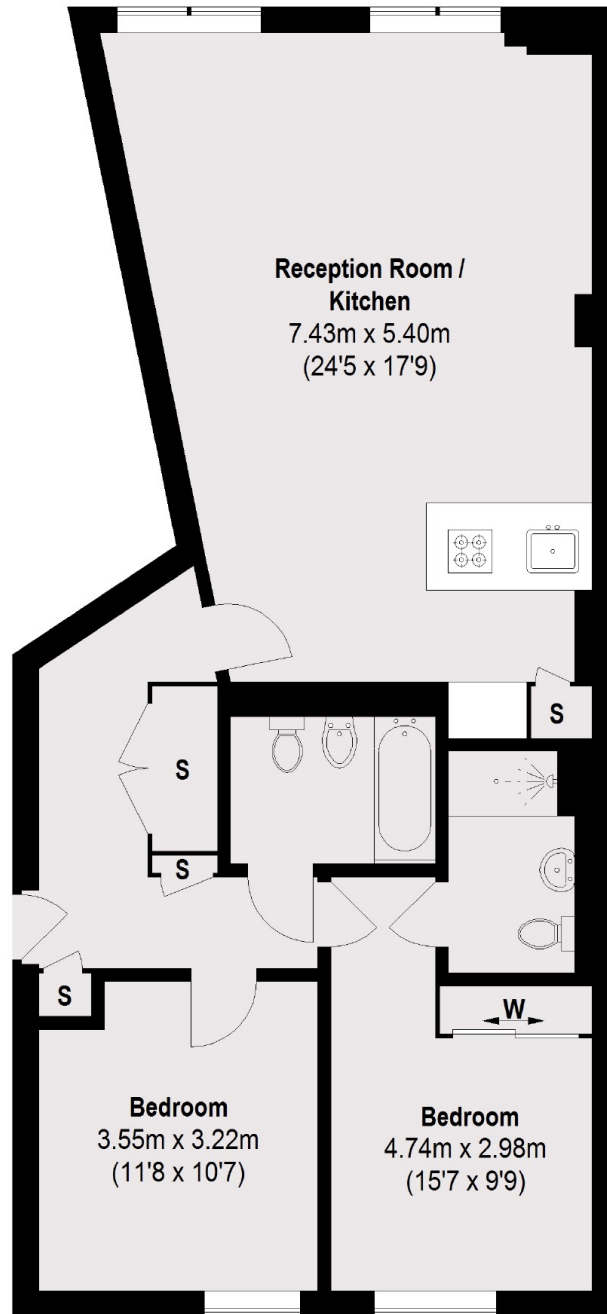
A rarely available and incredibly well located fourth floor apartment in Victor Wharf, with a very large and bright open plan living room and modern kitchen, two bathrooms and two generous double bedrooms, with ample storage throughout.

Victor Wharf, on Clink Street, is tucked just back of the riverside, in the heart of Bank Side and Borough Market, with London Bridge on your door step, as well as the Globe Theatre, Tate Modern and numerous other attractions.

Features

- Two Double Bedrooms
- Two Bathrooms
- Fantastic Location
- Secure Entry & Lift Access
- Permit Parking
- Chain Free Sale

Clink Street,
London, SE1



Fourth Floor

Total area (approx.): 82.84 sq. m (892 sq. ft)