



## Empire Square East, SE1

£650,000

A beautifully presented fifth floor apartment, with two double bedrooms, two bathrooms, a generous open plan kitchen, living room and dining room and a private courtyard facing balcony. 24 hour Concierge. Offers in excess of £650,000.

Empire Square is enviably located at the top of Long Lane, next to Borough High Street & Borough tube, with London Bridge Station, Bank Side, Borough Market and the Shard just beyond.

### Features

Offers in excess of £650,000  
Private Balcony  
Courtyard Facing  
Two Double Bedrooms - Two  
Bathrooms  
24 Hour Concierge  
Lift Access & Secure Entry  
Chain Free Sale



## Empire Square East, SE1

With a courtyard facing aspect this is a very quiet apartment. Both bedrooms are very good sizes, with an en-suite shower room off the master bedroom and an additional family bathroom.

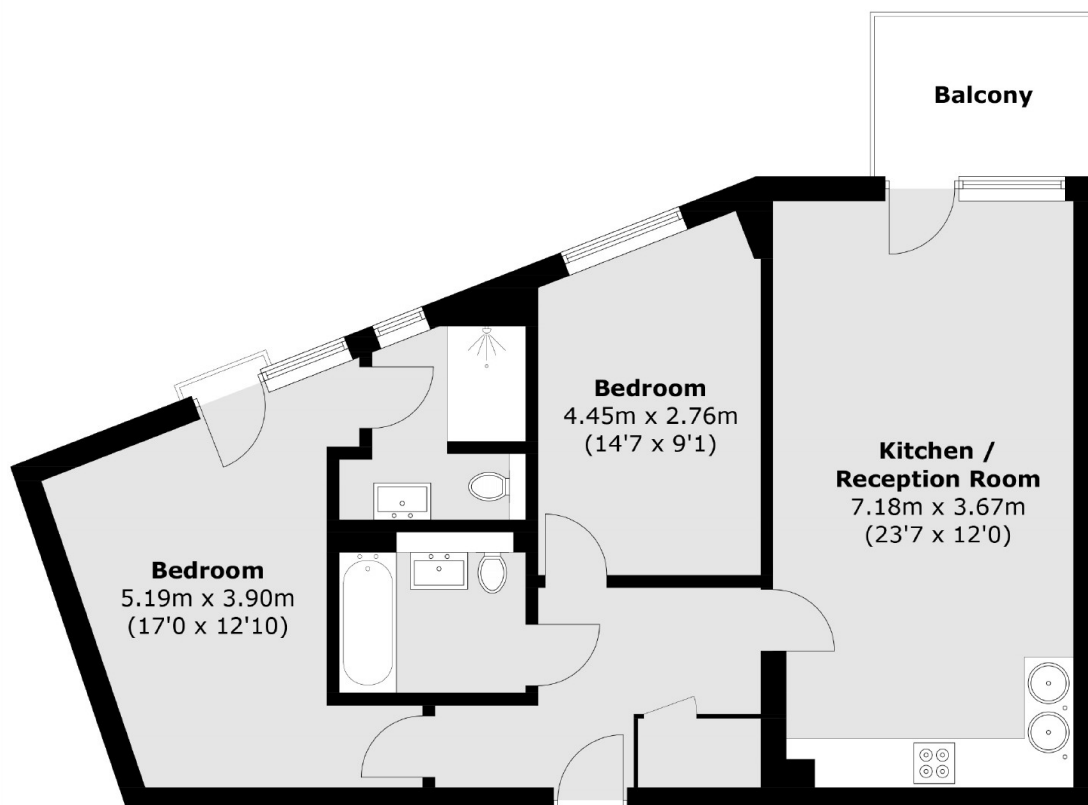
Empire Square is a well maintained, award winning development in the heart of vibrant Borough. The development benefits from a 24 hour concierge, secure entry, dual lift access and on-site gym (membership fee applies).

The Shard, Bermondsey Street Borough Market & The South Bank all in close proximity. An eclectic mix of boutiques, art galleries, theatres, gastro pubs, bars, restaurants & food markets, including Borough Market, Flat Iron & Mercato Metropolitano, are all on the doorstep.





# Empire Square East, London, SE1



Total area (approx.): 73.5 sq. m (791.1 sq. ft)  
Balcony area (approx.): 5.2 sq. m (56.0 sq. ft)