



Belvedere Road, SE1

£685,000

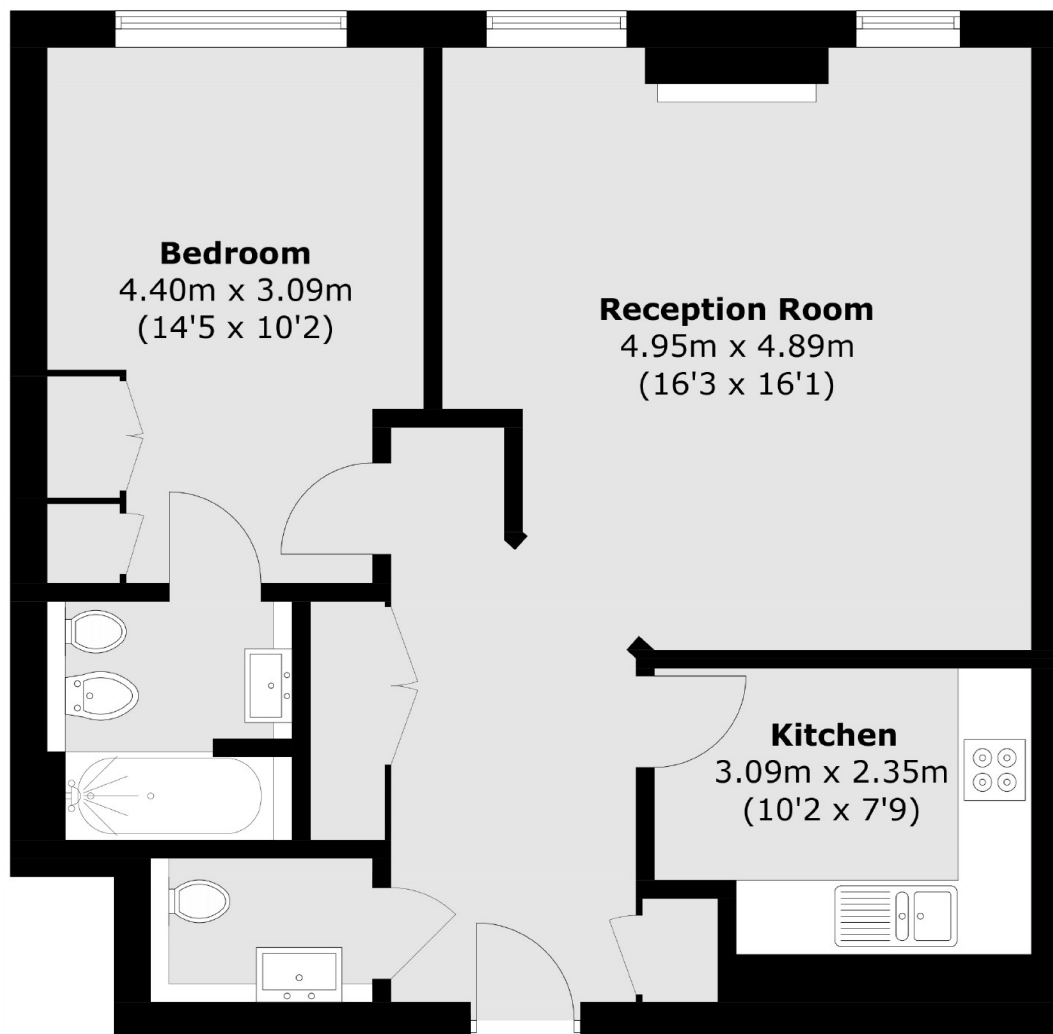
A very spacious and rarely available c700 sq ft apartment in the Whitehouse Apartments, with fantastic views of the River Thames & the London Eye, a very large living room, a separate kitchen, a generous double bedrooms, en-suite bathroom & additional WC. Plus secure parking, leisure facilities & 24 hour concierge.

Belvedere Road is enviably located on the South Bank of the River Thames, next to the Royal Festival Hall and Waterloo Bridge. Waterloo Station is just a stone's throw away, along with numerous restaurants and attractions.

Features

- Share of Freehold
- River Views
- Secure Allocated Parking
- Fantastic Views of the River & The Eye
- Large Communal Roof Terrace
- Residents' Gym, Swimming Pool & Sauna
- 24 Hour Concierge
- Chain Free Sale

Belvedere Road, London, SE1



Total area (approx.): 61.3 sq. m (659.8 sq. ft)