



Redcross Way, SE1

£425,000

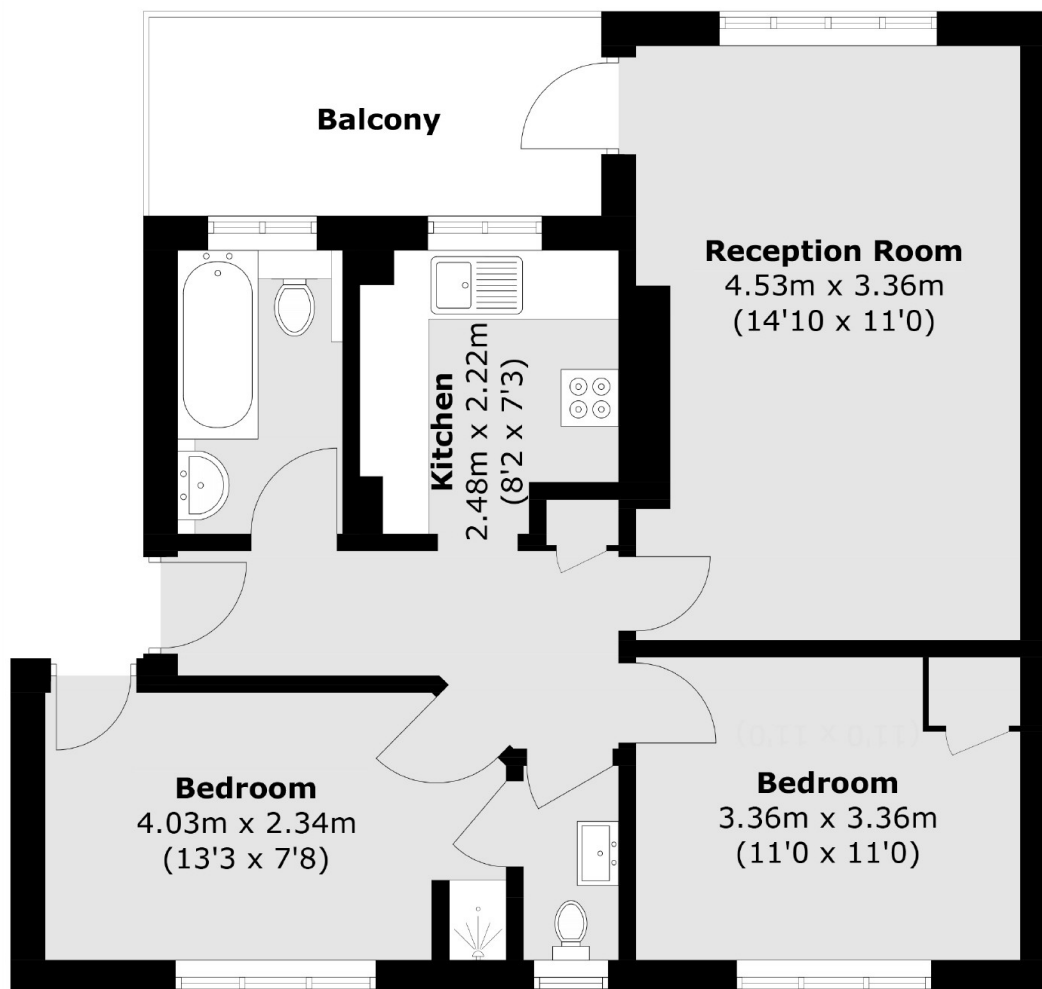
A highly attractive, top floor flat with a large living room, a separate kitchen and private balcony, plus two double bedrooms, a three piece bathroom and an additional WC. Permit parking is available. This is a chain free sale.

Incredibly well-located in the heart of SE1, adjacent to Red Cross Garden & Mint Street Park, moments from the Thames, London Bridge & Borough Market, as well as within the catchment area for Charles Dickens & the Cathedral School.

Features

- Chain Free Sale
- Two Double Bedrooms
- Private Balcony
- Large Living Room
- Separate Kitchen
- Attractive Views
- Permit Parking Available
- Excellent Transport Links

Redcross Way, London, SE1



Total area (approx.): 54.8 sq. m (589.9 sq. ft)
Balcony area (approx.): 6.9 sq. m (74.3 sq. ft)