



Long Lane, SE1

£830 Per week

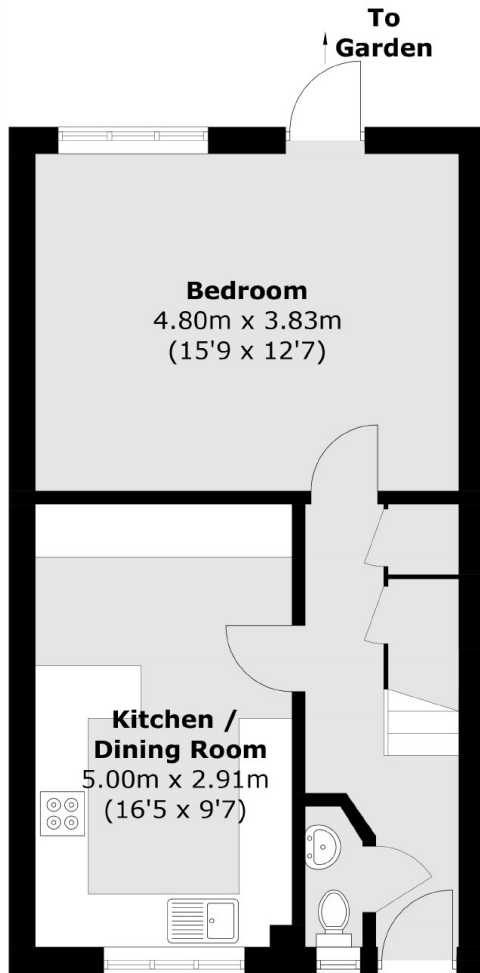
Well presented 3 bedroom house with private garden features modern large kitchen, modern bathroom with jet spa bath, separate w/c.

Perfectly positioned for Borough Market, and the bars and restaurants on Bermondsey Street. Well located for London Bridge and Borough Tube Stations for Transport links, within a 80 yards to a local Sainsbury's.

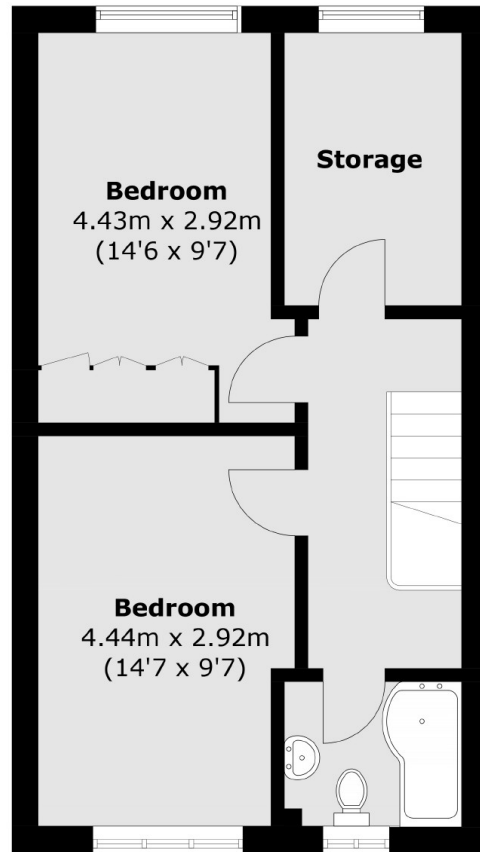
Features

- House
- Private Garden
- 3 Bedrooms
- Modern Kitchen
- Modern Bathroom

Long Lane, London, SE1



Ground Floor



First Floor

Total area (approx.): 86.7 sq. m (933.2 sq. ft)