



Weston Street, SE1

£1,250,000

An immaculately refurbished and extended three storey freehold house, with as large open plan living room and a high spec kitchen, a generous rear garden, four bedrooms and two modern bathrooms. Offers in excess of £1,250,000

Weston Street is enviably located in the heart of SE1, running just off Long Lane, within 0.3 Miles of London Bridge Station. Bermondsey Street, Borough Market and the Southbank are on your doorstep with numerous attractions and amenities nearby.

Features

- OIEO £1,250,000
- Four Double Bedrooms
- Freehold House
- Open Plan Living
- High Spec Finish
- Front & Back Garden
- Great Transport Links



Weston Street, SE1

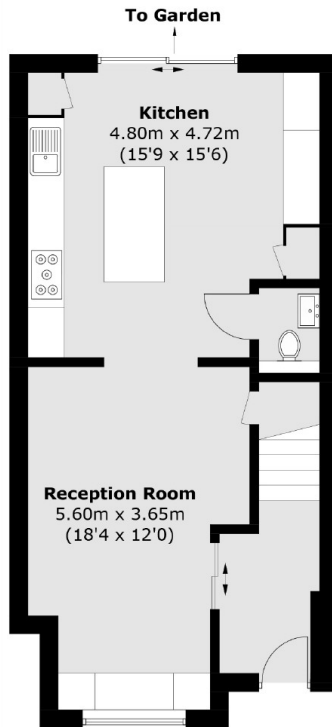
The house has been finished to a very high standard with underfloor heating throughout, Amtico style flooring, bespoke lighting, fitted speakers, hyper optic, a high quality fully fitted kitchen and two stylish bathrooms.

Spread over three floors and in excess of 1,300 sq ft, with a front and back garden, this is a substantial home, ideal for a family, investors or sharers, looking to live in central SE1.

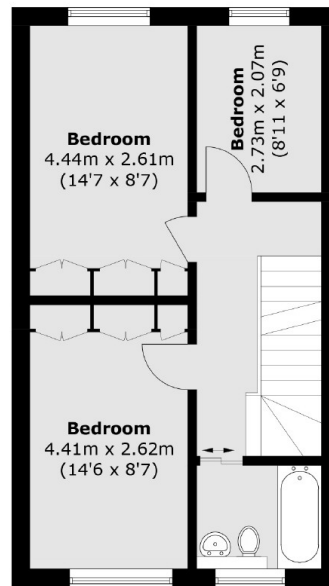
There are three generous double rooms and a fourth smaller bedroom, a family bathroom and an ensuite bathroom, connected to the top floor master bedroom. The full ground floor is open plan with a spacious living room and connected kitchen-diner, leading out to the garden.



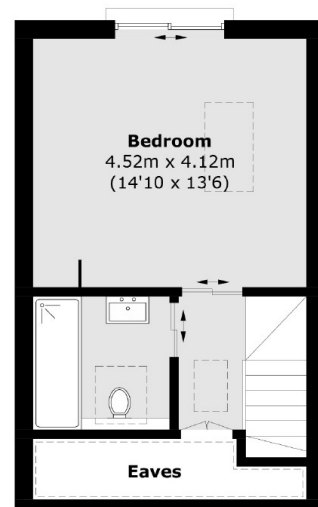
Weston Street, London, SE1



Ground Floor



First Floor



Second Floor

Total area (approx.): 121.7 sq. m (1,309.9 sq. ft)
(Excluding Eaves)