



Great Guildford Street, SE1

£995 Per week

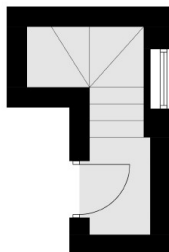
Tastefully converted 3 double bedroom apartment in former Victorian Public House. The apartment is a light and spacious duplex of 1,424 sq ft and offers part furnished accommodation. The views from the private timber decked patio are far reaching and include a partial view of the London Eye.

Located within easy reach of Southwark, Borough and London Bridge Stations. The apartment is within a short walk of the many shops, bars and restaurants of Borough High Street and the renowned Borough Market

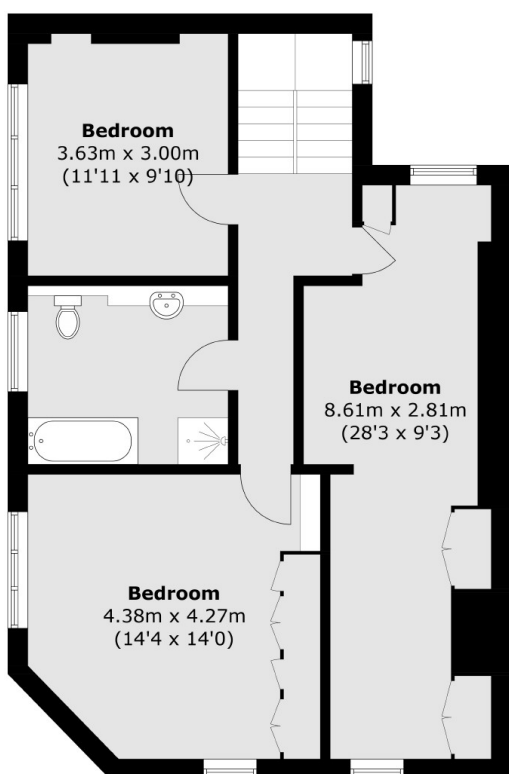
Features

- Great space 1,424 sq ft
- Private patio
- Part furnished
- Loft style duplex
- lots of natural light
- Long term tenancy

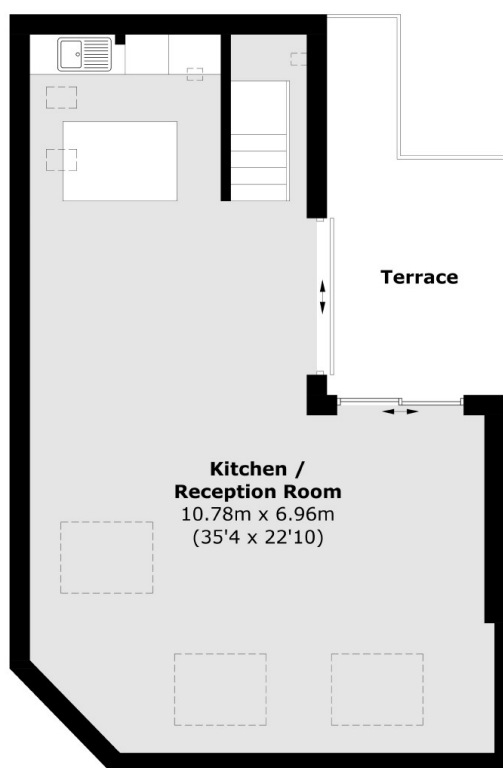
Great Guildford Street, London, SE1



First Floor



Second Floor



Third Floor

Total area (approx.): 132.3 sq. m (1424.1 sq. ft)